

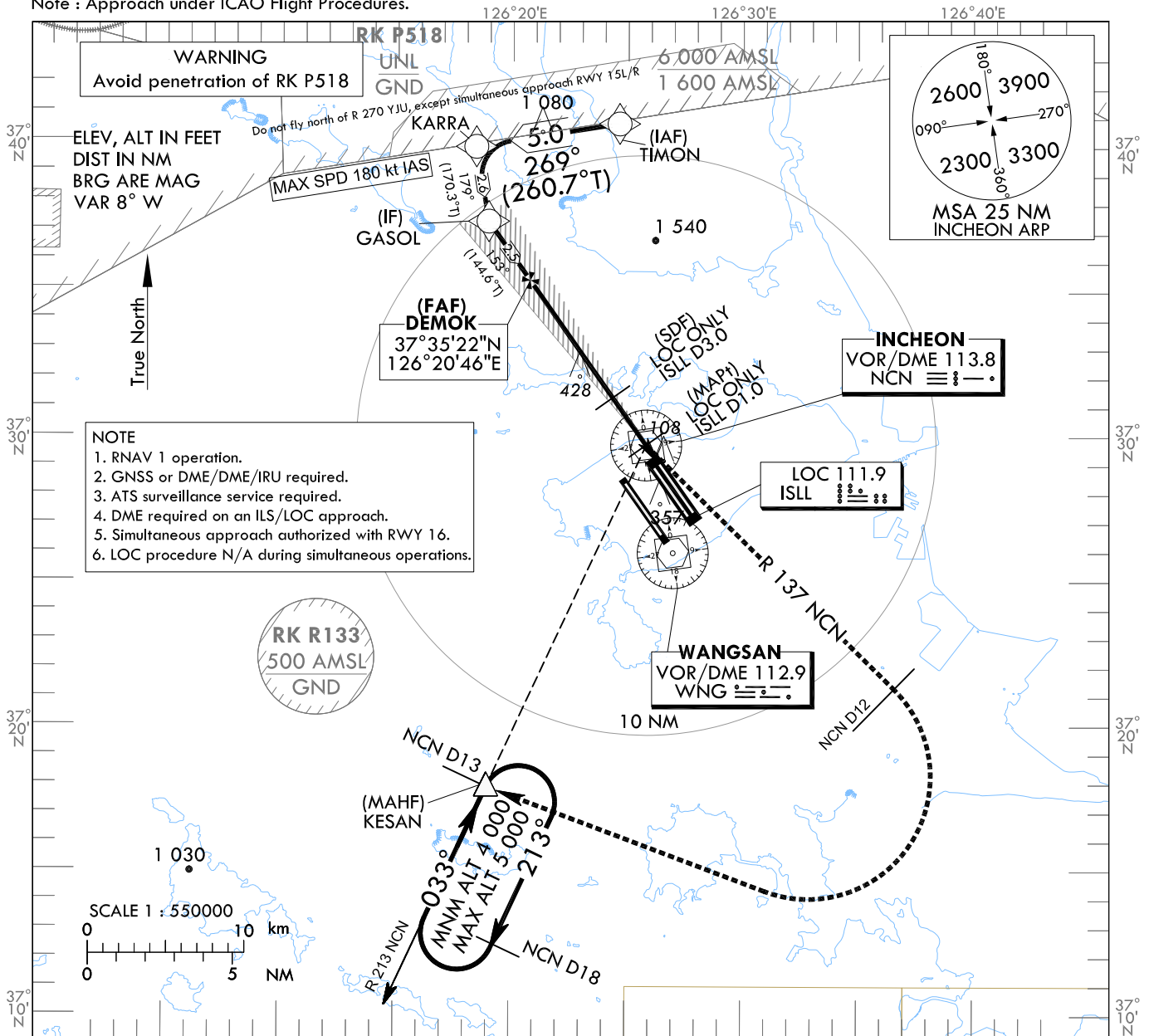
**INSTRUMENT
APPROACH
CHART - ICAO**

AERODROME ELEV 23 ft
HEIGHTS RELATED TO
THR RWY 15L - ELEV 23 ft

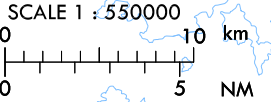
SEOUL APP 119.75
119.1
INCHEON TWR 118.2
118.8

SEOUL/Incheon Intl(RKSI)
ILS Z or LOC Z RWY 15L
CAT II & III

Note : Approach under ICAO Flight Procedures.

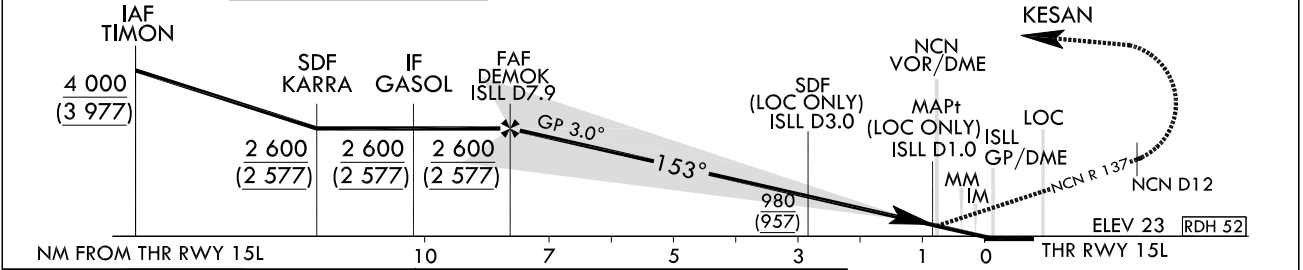


NOTE
1. RNAV 1 operation.
2. GNSS or DME/DME/IRU required.
3. ATS surveillance service required.
4. DME required on an ILS/LOC approach.
5. Simultaneous approach authorized with RWY 16.
6. LOC procedure N/A during simultaneous operations.



TRANSITION ALT 14 000
TRANSITION LVL FL 140

RECOMMENDED PROFILE	DME ISLL	7	6	5	4	3	2	1
Final Approach Gradient 5.35%, 325 ft ft/NM	ALT(HGT)	2 299	1 974	1 649	1 323	998	673	340
		(2 276)	(1 951)	(1 626)	(1 300)	(975)	(650)	(317)



CATEGORY	DA(DH)/MDA(MDH)	A					B					C					D					DL
		A					B					C					D					
Straight-in	CAT-I	FULL	223					RVR 550 m, VIS 800 m														
		ALS INOP	(200)					1 200 m														
	LOC	FULL	340					700 m														
		ALS INOP	(317)					1 400 m														
	CAT II	123(100)					300 m					300 m ² / 350 m										
	CAT IIIa	-					175 m															
	CAT IIIb	-					75 m ² / 125 m															

MISSED APPROACH
Climb to 520 ft on RWY Heading then turn LEFT to intercept and follow R 137 NCN to 12 DME, continue climb to 4 000 ft RIGHT turn direct to KESAN. Hold as published.
1) For CAT D/DL aeroplane conducting an autoland.
2) Aeroplane use Fail-operational system.
* Timing Not authorized for defining MAPt.
* Circling Not authorized.

Change : Establishment of CAT II , III.

SEOUL/Incheon Intl(RKSI)
ILS Z or LOC Z RWY 15L
CAT II & III

AERONAUTICAL DATA TABULATION

ILS Z/LOC Z Approach to RWY 15L		
Fix / Point		Coordinates
TIMON(IAF)		37°40'48.0" N 126°24'36.1" E
KARRA(SDF)		37°39'59.6" N 126°18'23.2" E
GASOL(IF)		37°37'24.7" N 126°18'56.4" E
DEMOK(FAF)	BRG 152.61°/7.92NM ISLL	37°35'22.4" N 126°20'45.7" E
D3.0 ISLL(SDF LOC ONLY)	BRG 152.61°/2.98NM ISLL	37°31'20.2" N 126°24'21.7" E
D1.0 ISLL(MAP† LOC ONLY)	BRG 152.61°/0.98NM ISLL	37°29'42.2" N 126°25'49.0" E
NCN VOR/DME		37°29'41.7" N 126°25'49.2" E
THR RWY 15L		37°29'02.20" N 126°26'24.56" E
ISLL DME		37°28'56.4" N 126°26'35.6" E
Climb to 520 ft	HDG 153	-
D12 NCN	R 137 NCN/12.00NM NCN	37°22'06.2" N 126°37'29.9" E
KESAN	BRG 213.08°/13.00NM NCN	37°17'53.0" N 126°18'58.0" E

Change : Information of procedure name.

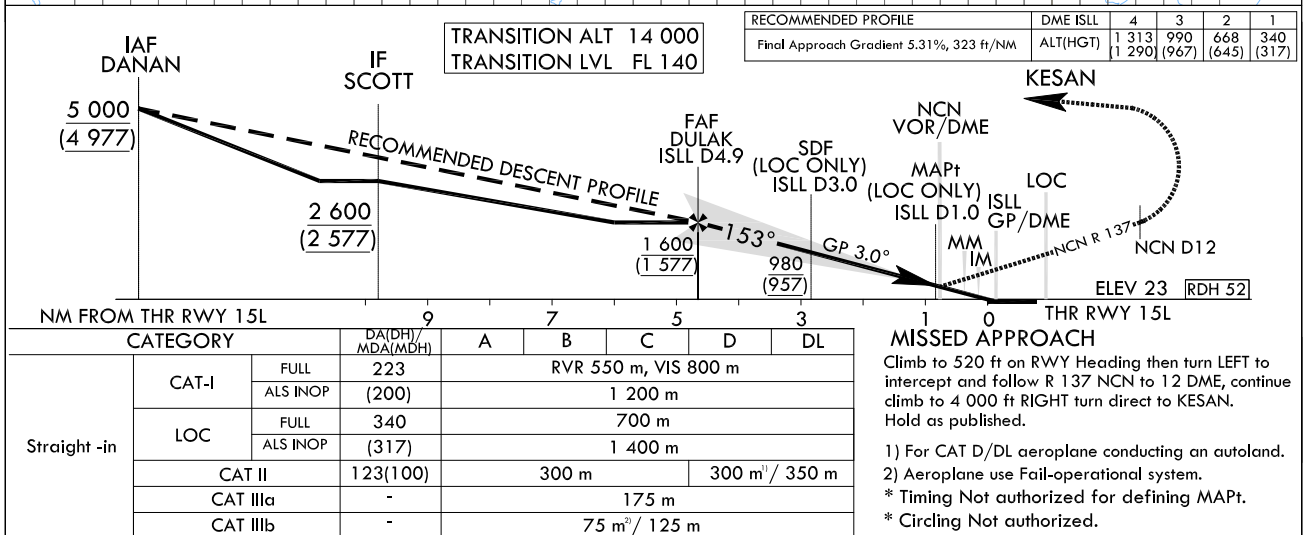
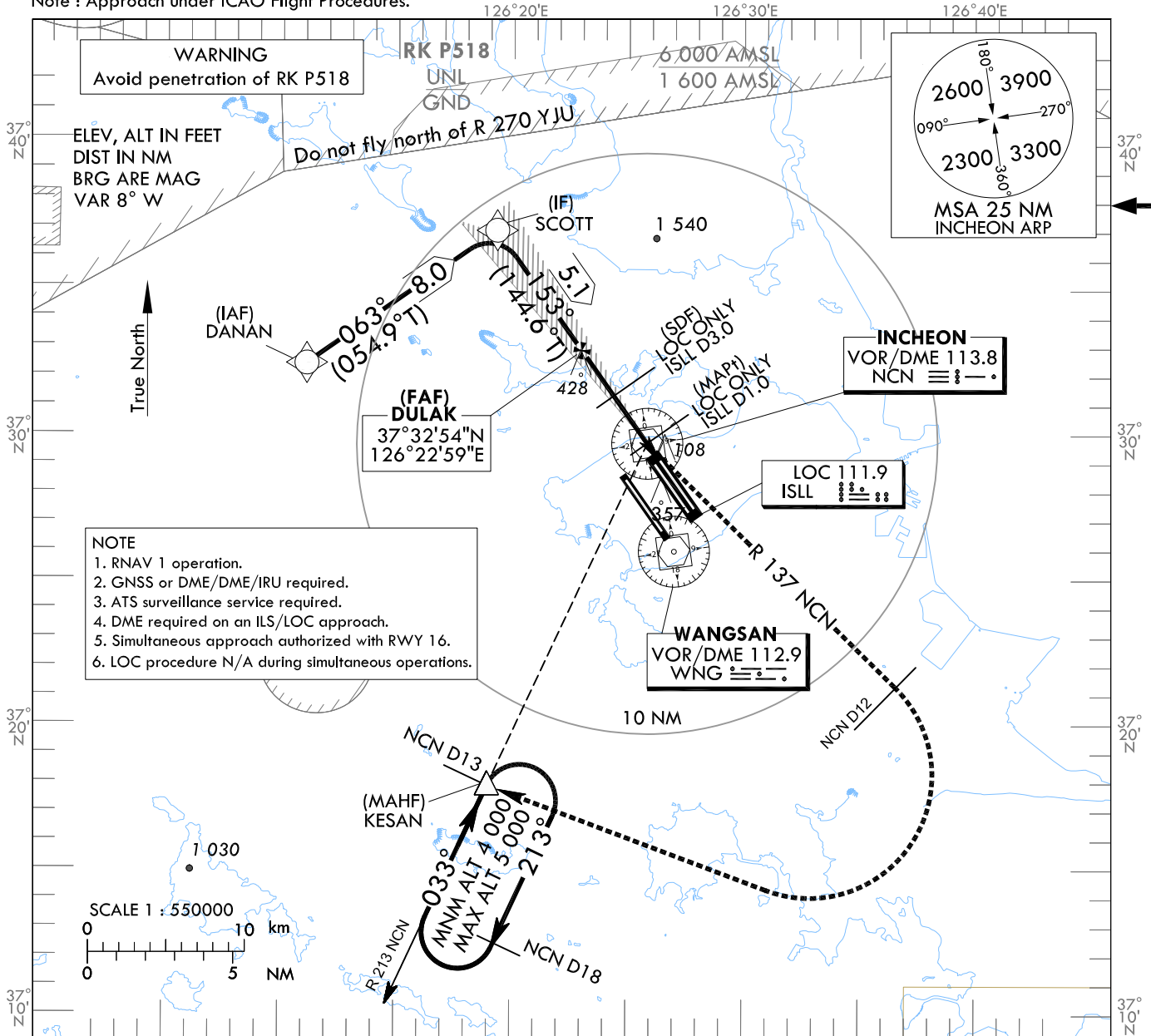
**INSTRUMENT
APPROACH
CHART - ICAO**

AERODROME ELEV 23 ft
HEIGHTS RELATED TO
THR RWY 15L - ELEV 23 ft

SEOUL APP 119.75
119.1
INCHEON TWR 118.2
118.8

SEOUL/Incheon Intl(RKSI)
ILS Y or LOC Y RWY 15L
CAT II & III

Note : Approach under ICAO Flight Procedures.



Change : Amended phrases.

SEOUL/Incheon Intl(RKSI)
 ILS Y or LOC Y RWY 15L
 CAT II & III

AERONAUTICAL DATA TABULATION

ILS Y/LOC Y Approach to RWY 15L			
Fix / Point		Coordinates	
DANAN(IAF)		37°32'26.0" N	126°11'04.0" E
SCOTT(IF)		37°37'01.6" N	126°19'17.0" E
DULAK(FAF)	BRG 152.51°/4.89NM ISLL	37°32'53.5" N	126°22'58.5" E
D3.0 ISLL(SDF LOC ONLY)	BRG 152.51°/2.98NM ISLL	37°31'20.2" N	126°24'21.7" E
D1.0 ISLL(MAPt LOC ONLY)	BRG 152.51°/0.98NM ISLL	37°29'42.2" N	126°25'49.0" E
NCN VOR/DME		37°29'41.7" N	126°25'49.2" E
THR RWY 15L		37°29'02.20" N	126°26'24.56" E
ISLL DME		37°28'56.4" N	126°26'35.6" E
Climb to 520 ft	HDG 153	-	
D12 NCN	R 137 NCN/12.00NM NCN	37°22'06.2" N	126°37'29.9" E
KESAN	BRG 213.08°/13.00NM NCN	37°17'53.0" N	126°18'58.0" E

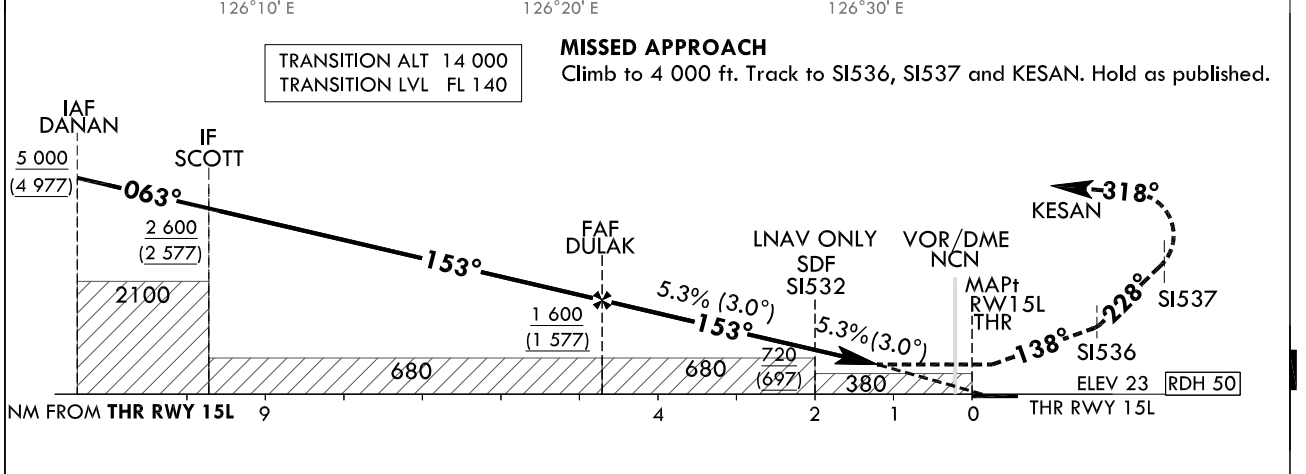
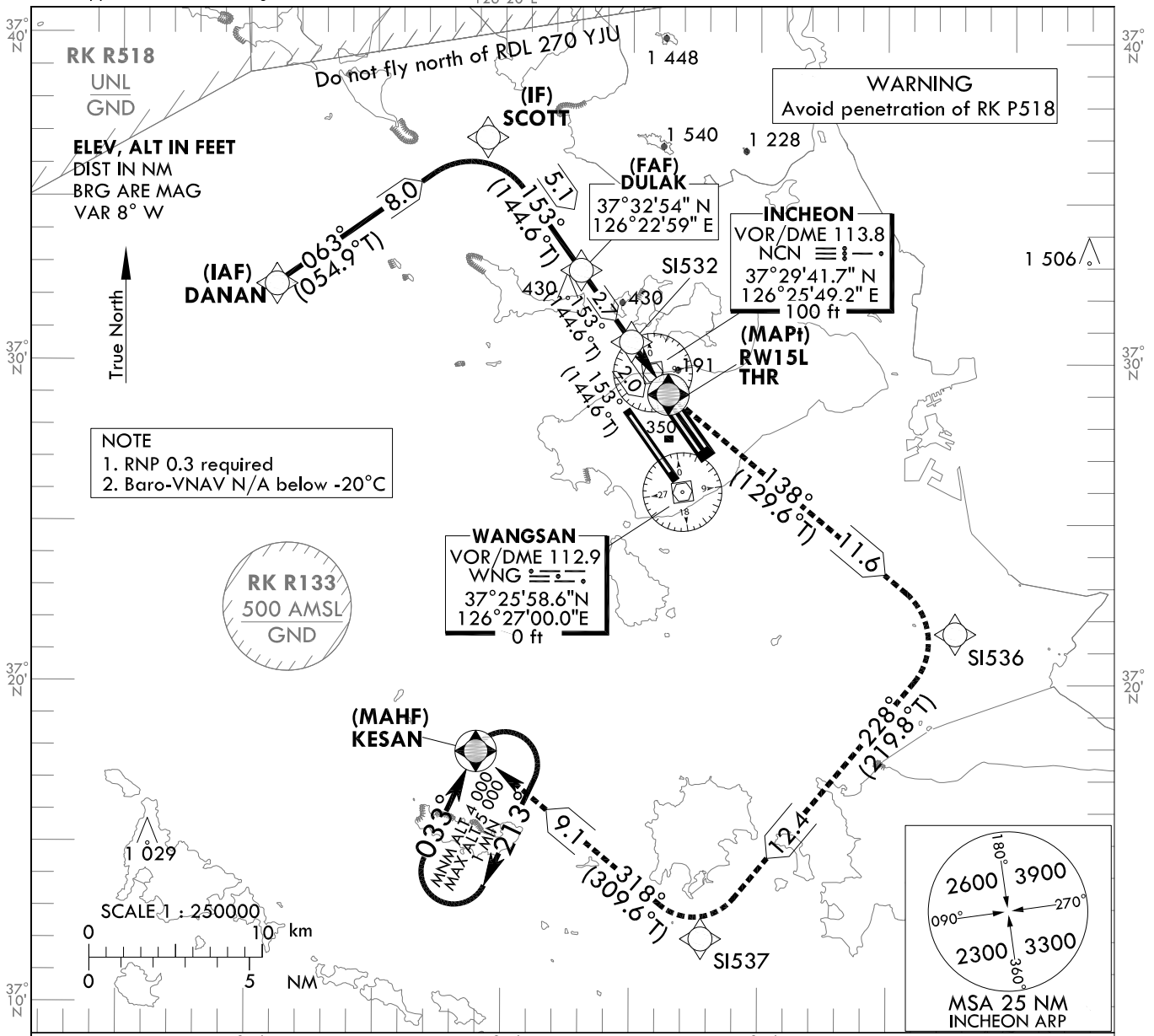
**INSTRUMENT
APPROACH
CHART - ICAO**

AERODROME ELEV 23 ft
HEIGHTS RELATED TO
THR RWY 15L - ELEV 23 ft

SEOUL APP 119.75
119.1
INCHEON TWR 118.2
118.8

**SEOUL/Incheon Intl(RKSI)
RNAV(GNSS)
RWY 15L**

Note : Approach under ICAO Flight Procedures.



CATEGORY		MDA(H)/DA(H)	A	B	C	D	Knots						
LNAV	FULL	450 (427)		1 300 m			Rate of descent	V/V fpm	323	485	647	809	970
	ALS INOP			2 000 m									
LNAV/VNAV	FULL	430 (407)		1 200 m			* Timing Not authorized for defining MAPt. * Circling Not authorized.						
	ALS INOP			1 900 m									

Change : Amended phrases.

SEOUL/Incheon Intl(RKSI)
RNAV(GNSS)
RWY 15L

AERONAUTICAL DATA TABULATION

Instrument Approach Procedure Coding Tables

RNAV(GNSS) RWY 15L

Serial Number	Path Descriptor	Waypoint Identifier	Fly-over	Course/Track °M(°T)	Distance (NM)	Turn direction	Altitude (ft)	Speed (kt)	Coordinates	VPA/TCH	Navigation specification	Remarks
001	IF	DANAN	-	-	-	-	+5 000	-	373226.0 N 1261104.0 E (R 291 NCN/D12, R 305 WNG/D14)	-	RNP APCH	IAF
002	TF	SCOTT	-	063 (054.9)	8.0	-	+2 600	-	373701.6 N 1261917.0 E (R 333 NCN/D9, R 339 WNG/D13)	-	RNP APCH	IF
003	TF	DULAK	-	153 (144.6)	5.1	-	+1 600	-	373253.5 N 1262258.5 E (R 333 NCN/D4, R 343 WNG/D8)	-	RNP APCH	FAF
004	TF	S1532	-	153 (144.6)	2.7	-	+720	-	373040.2 N 1262457.3 E (R 333 NCN/D1, R 349 WNG/D5)	-	RNP APCH	SDF
005	TF	RW15L	Y	153 (144.6)	2.0	-	+450	-	372902.20 N 1262624.56 E (R 152 NCN/D1, R 359 WNG/D3)	-3.01/50	RNP APCH	MAPt
006	TF	S1536	-	138 (129.6)	11.6	-	-	-	372135.4 N 1263739.8 E (R 139 NCN/D12, R 125 WNG/D10)	-	RNP APCH	-
007	TF	S1537	-	228 (219.8)	12.4	-	-	-	371203.9 N 1262745.9 E (R 183 NCN/D18, R 185 WNG/D14)	-	RNP APCH	-
008	TF	KESAN	Y	318 (309.6)	9.1	-	+4 000	-	371753.0 N 1261858.0 E (R 213 NCN/D13, R 226 WNG/D10)	-	RNP APCH	-
009	HM	KESAN	Y	033 (025.0)	-	R	-5 000 +4 000	-	371753.0 N 1261858.0 E (R 213 NCN/D13, R 226 WNG/D10)	-	RNP APCH	1 min (Outbound timing)

Change : Amended phrases.

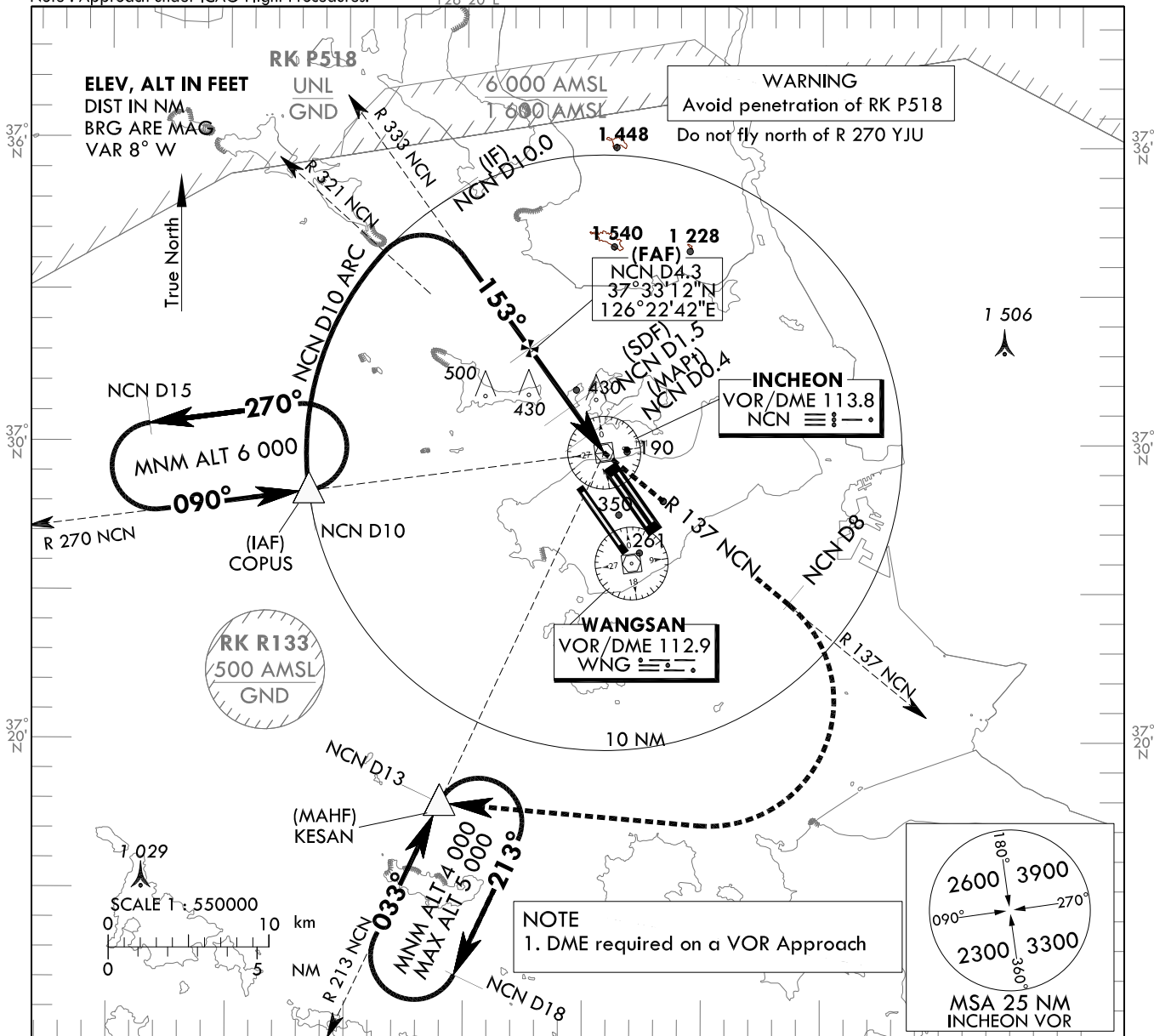
**INSTRUMENT
APPROACH
CHART - ICAO**

AERODROME ELEV 23 ft
HEIGHTS RELATED TO
THR RWY 15L - ELEV 23 ft

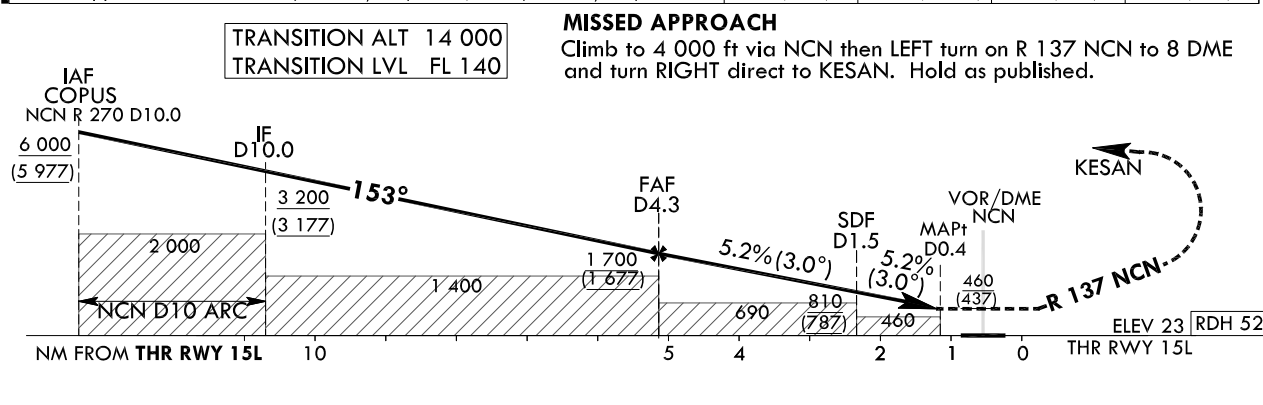
SEOUL APP 119.75
119.1
INCHEON TWR 118.2
118.8

**SEOUL/Incheon Intl(RKSI)
VOR
RWY 15L**

Note : Approach under ICAO Flight Procedures.



RECOMMENDED DESCENT PROFILE		DME NCN	3	2	1
Final Approach Gradient 5.2%(317.9 ft/NM)to SDF, 5.2%(318.3 ft/NM) to THR		ALT(HGT)	1 287(1 264)	969(946)	650(628)



CATEGORY	FULL	ALS INOP	MDA(MDH)	A				B				C				D				Knots	60	90	120	150	180
				A	B	C	D	A	B	C	D	A	B	C	D	A	B	C	D						
Straight-in			460 (437)	1 600 m				Rate of descent				V/V fpm				318	477	636	795	954					
				2 300 m				* Timing Not authorized for defining MAPt.				* Circling Not authorized.													

Change : Amended phrases.

SEOUL/Incheon Intl(RKSI)

VOR

RWY 15L

AERONAUTICAL DATA TABULATION

VOR Approach to RWY 15L from COPUS			
Fix / Point		Coordinates	
COPUS(IAF)		37°28'21.8" N	126°13'22.0" E
D10 NCN(IF)	BRG 153.00°/10.00NM NCN	37°37'52.4" N	126°18'33.7" E
D4.3 NCN(FAF)	BRG 153.00°/4.30NM NCN	37°33'12.4" N	126°22'42.4" E
D1.5 NCN(SDF)	BRG 153.00°/1.50NM NCN	37°30'55.0" N	126°24'44.2" E
D0.4 NCN(MAPt)	BRG 153.00°/0.40NM NCN	37°30'01.0" N	126°25'32.1" E
NCN VOR/DME		37°29'41.7" N	126°25'49.2" E
THR RWY15L	Final approach descent angle 2.99°(FAF - SDF)/3.00°(SDF - THR)	37°29'02.20" N	126°26'24.56" E
D8 NCN	R 137 NCN/8.00NM NCN	37°24'40.1" N	126°33'39.1" E
KESAN	BRG 283.39°/13.00NM NCN	37°17'53.0" N	126°18'58.0" E

Change : Amended phrases.

**INSTRUMENT
APPROACH
CHART - ICAO**

AERODROME ELEV 23 ft
HEIGHTS RELATED TO
THR RWY 15R - ELEV 23 ft

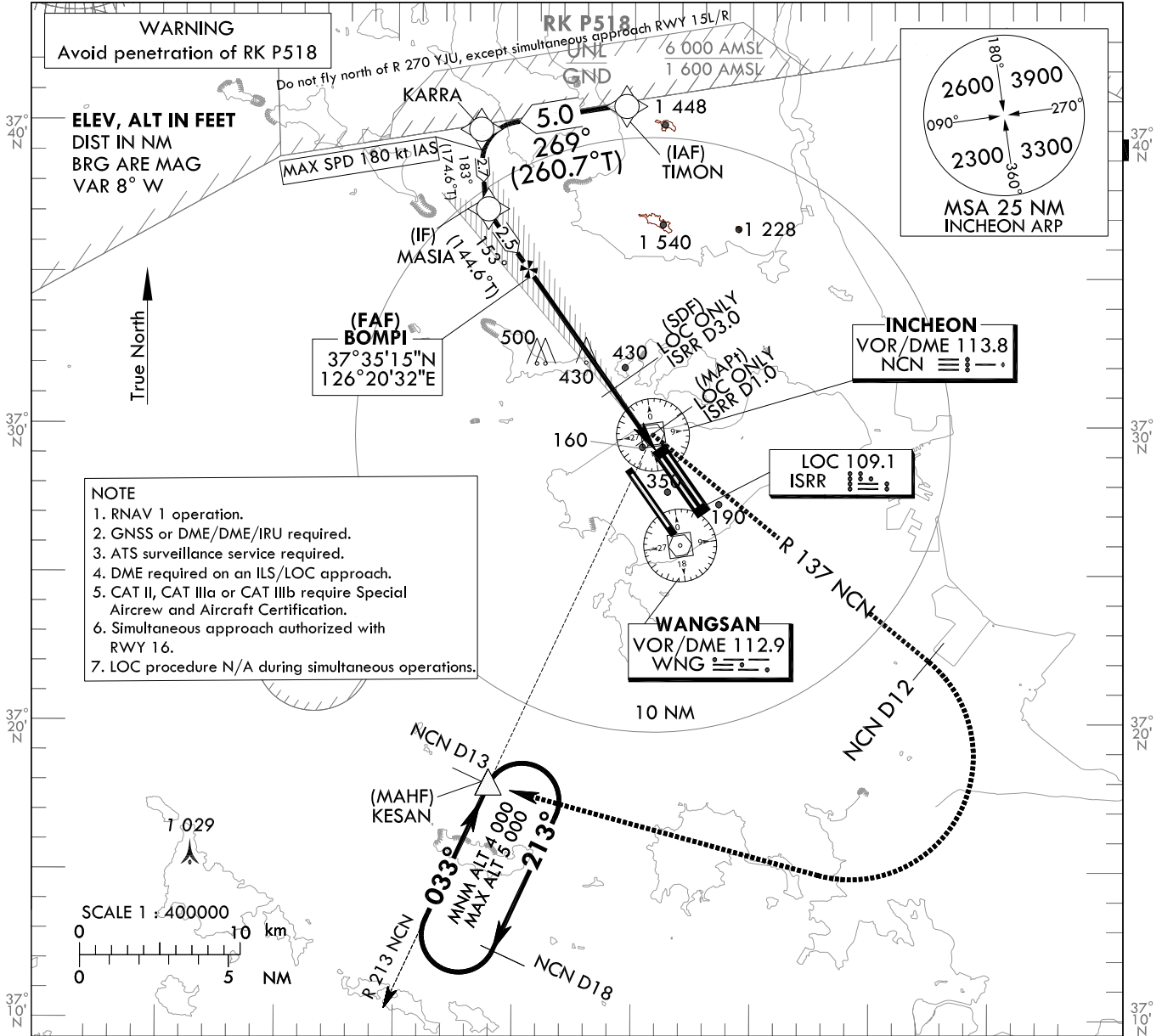
SEOUL APP 119.75
119.1
INCHEON TWR 118.2
118.8

**SEOUL/Incheon Intl(RKSI)
ILS Z or LOC Z RWY 15R
CAT II & III**

Note : Approach under ICAO Flight Procedures.

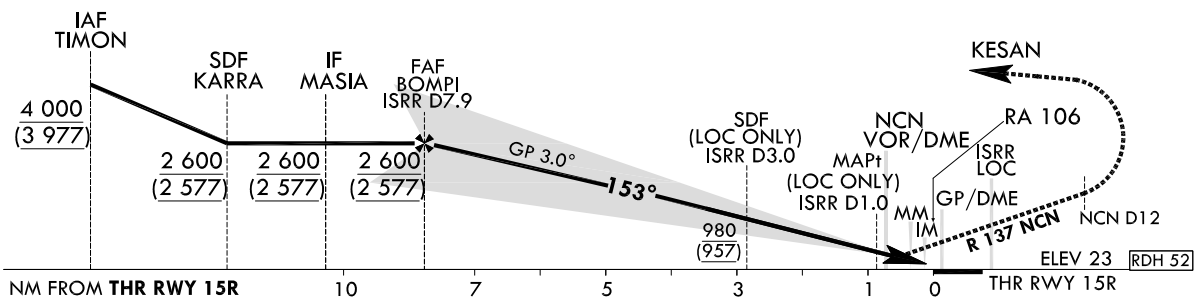
126°20' E

126°40' E



TRANSITION ALT 14 000
TRANSITION LVL FL 140

RECOMMENDED PROFILE		DME ISRR	7	6	5	4	3	2
Final Approach Gradient 5.35%, 325 ft/NM		ALT(HGT)	2 299 (2 276)	1 974 (1 951)	1 649 (1 626)	1 323 (1 300)	998 (975)	673 (650)



CATEGORY	DA(DH)/MDA(MDH)	A B C D DL					
		FULL	223 (200)	RVR 550 m, VIS 800 m			
CAT-I	ALS INOP		1 200 m				
LOC	GP INOP	370 (347)	900 m				
	GP & ALS INOP		1 600 m				
CAT II	123(100)	300 m		300 m ¹ /350 m			
CAT IIIa	-	175 m					
CAT IIIb	-	75 m ² /125 m					

MISSED APPROACH
Climb to 520 ft on RWY Heading then turn LEFT to intercept and follow R 137 NCN to 12 DME, continue climb to 4 000 ft RIGHT turn direct to KESAN. Hold as published.

1) For CAT D/DL aeroplane conducting an autoland.
2) Aeroplane use Fail-operational system.

* Timing Not authorized for defining MAPt.
* Circling Not authorized.

Change : Information of MSA(2100 → 2300).

SEOUL/Incheon Intl(RKSI)
ILS Z or LOC Z RWY 15R
CAT II & III

AERONAUTICAL DATA TABULATION

ILS/LOC Approach to RWY 15R		
Fix / Point		Coordinates
TIMON(IAF)		37°40'48.0" N 126°24'36.1" E
KARRA(SDF)		37°39'59.6" N 126°18'23.2" E
MASIA(IF)		37°37'16.9" N 126°18'42.6" E
BOMPI(FAF)	BRG 152.61°/7.92 NM ISRR	37°35'14.6" N 126°20'31.9" E
D3.0 ISRR(SDF LOC ONLY)	BRG 152.61°/3.00 NM ISRR	37°31'13.4" N 126°24'07.1" E
D1.0 ISRR(MAP† LOC ONLY)	BRG 152.61°/1.00 NM ISRR	37°29'35.3" N 126°25'34.4" E
NCN VOR/DME		37°29'41.7" N 126°25'49.2" E
THR RWY15R		37°28'54.44" N 126°26'10.82" E
ISRR DME		37°28'48.7" N 126°26'21.9" E
Climb to 520 ft	HDG 153	-
D12 NCN	R 137 NCN/12.00 NM NCN	37°22'06.2" N 126°37'29.9" E
KESAN	BRG 213.07°/13.00 NM NCN	37°17'53.0" N 126°18'58.0" E

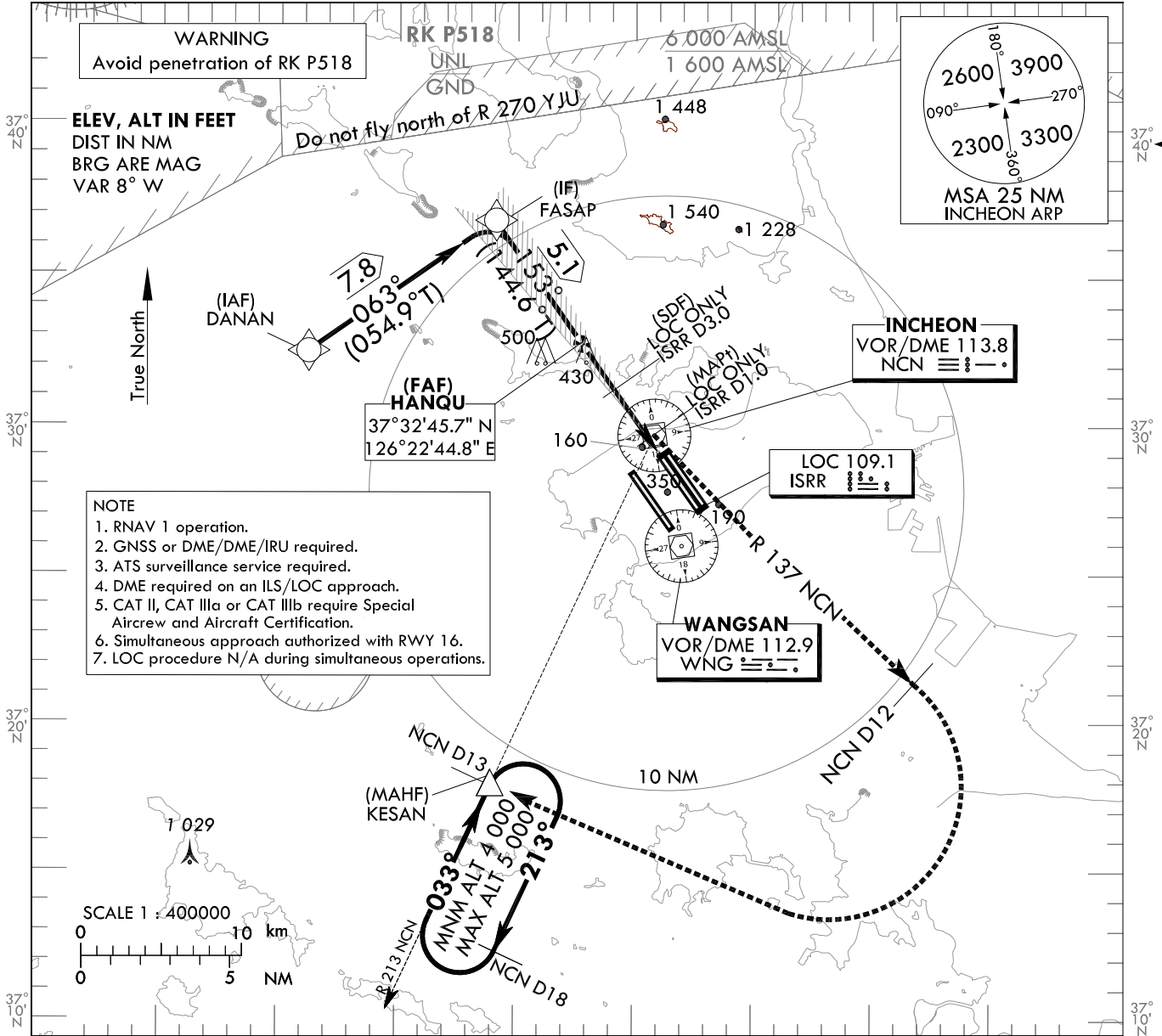
**INSTRUMENT
APPROACH
CHART - ICAO**

AERODROME ELEV 23 ft
HEIGHTS RELATED TO
THR RWY 15R - ELEV 23 ft
126°20' E

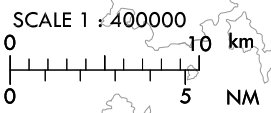
SEOUL APP 119.75
119.1
INCHEON TWR 118.2
118.8

SEOUL/Incheon Intl(RKSI)
ILS Y or LOC Y RWY 15R
CAT II & III

Note : Approach under ICAO Flight Procedures.

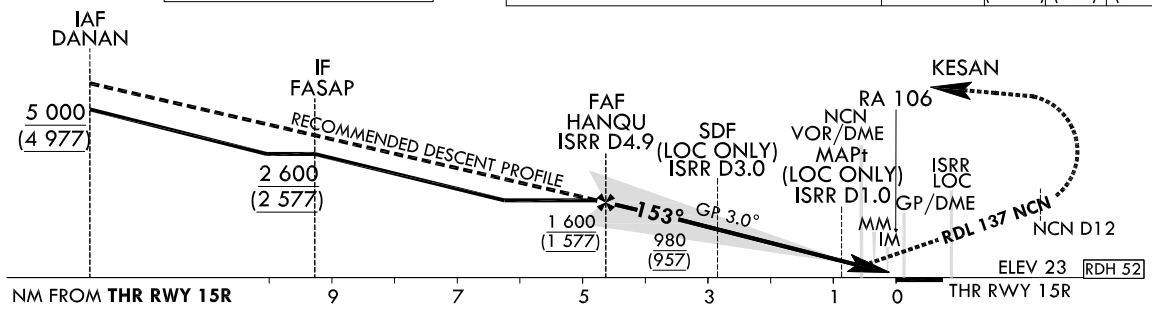


- NOTE
1. RNAV 1 operation.
 2. GNSS or DME/DME/IRU required.
 3. ATS surveillance service required.
 4. DME required on an ILS/LOC approach.
 5. CAT II, CAT IIIa or CAT IIIb require Special Aircrew and Aircraft Certification.
 6. Simultaneous approach authorized with RWY 16.
 7. LOC procedure N/A during simultaneous operations.



TRANSITION ALT 14 000
TRANSITION LVL FL 140

RECOMMENDED PROFILE		DME ISRR	4	3	2
Final Approach Gradient 5.31%, 323 ft/NM		ALT(HGT)	1 313 (1 290)	990 (967)	667 (644)



CATEGORY	DA(DH)/MDA(MDH)	A	B	C	D	DL																																										
		<table border="1"> <tr> <td rowspan="2">Straight-in</td> <td>CAT-I</td> <td>FULL 223 (200)</td> <td colspan="4">RVR 550 m, VIS 800 m</td> </tr> <tr> <td>ALS INOP</td> <td>-</td> <td colspan="4">1 200 m</td> </tr> <tr> <td>LOC</td> <td>GP INOP 370 (347)</td> <td colspan="4">900 m</td> </tr> <tr> <td></td> <td>GP & ALS INOP</td> <td colspan="4">1 600 m</td> </tr> <tr> <td></td> <td>CAT II</td> <td>123(100)</td> <td>300 m</td> <td colspan="2">300 m¹⁾/350 m</td> <td></td> </tr> <tr> <td></td> <td>CAT IIIa</td> <td>-</td> <td colspan="2">175 m</td> <td></td> </tr> <tr> <td></td> <td>CAT IIIb</td> <td>-</td> <td colspan="2">75 m²⁾/125 m</td> <td></td> </tr> </table>	Straight-in	CAT-I	FULL 223 (200)	RVR 550 m, VIS 800 m				ALS INOP	-	1 200 m				LOC	GP INOP 370 (347)	900 m					GP & ALS INOP	1 600 m					CAT II	123(100)	300 m	300 m ¹⁾ /350 m				CAT IIIa	-	175 m				CAT IIIb	-	75 m ²⁾ /125 m				
Straight-in	CAT-I	FULL 223 (200)		RVR 550 m, VIS 800 m																																												
	ALS INOP	-	1 200 m																																													
LOC	GP INOP 370 (347)	900 m																																														
	GP & ALS INOP	1 600 m																																														
	CAT II	123(100)	300 m	300 m ¹⁾ /350 m																																												
	CAT IIIa	-	175 m																																													
	CAT IIIb	-	75 m ²⁾ /125 m																																													

MISSED APPROACH
Climb to 520 ft on RWY Heading then turn LEFT to intercept and follow RDL 137 NCN to 12 DME, continue climb to 4 000 ft RIGHT turn direct to KESAN.
Hold as published.

1) For CAT D/DL aeroplane conducting an autoland.
2) Aeroplane use Fail-operational system.

* Timing Not authorized for defining MAPt.
* Circling Not authorized.

Change : Amended phrases.

SEOUL/Incheon Intl(RKSI)
ILS Y or LOC Y RWY 15R
CAT II & III

AERONAUTICAL DATA TABULATION

ILS/LOC Approach to RWY 15R from DANAN to FASAP(IF)	
Fix / Point	Coordinates
DANAN(IAF)	37°32'26.0" N 126°11'04.0" E
FASAP(IF)	37°36'53.8" N 126°19'03.3" E

ILS/LOC Approach to RWY 15R from FASAP(IF) to MAHF	
Fix / Point	Coordinates
HANQU(FAF) BRG 152.61°/4.89 NM ISRR	37°32'45.7" N 126°22'44.8" E
D3.0 ISRR(SDF) (LOC ONLY) BRG 152.61°/3.00 NM ISRR	37°31'13.4" N 126°24'07.1" E
D1.0 ISRR(MAPt) (LOC ONLY) BRG 152.61°/1.00 NM ISRR	37°29'35.3" N 126°25'34.4" E
NCN VOR/DME	37°29'41.7" N 126°25'49.2" E
THR RWY 15R	37°28'54.44" N 126°26'10.82" E
ISRR DME	37°28'48.7" N 126°26'21.9" E
Climb to 520 ft HDG 153	-
D12 NCN	-
KESAN BRG 213.07°/13.00 NM NCN	37°17'53.0" N 126°18'58.0" E

**INSTRUMENT
APPROACH
CHART - ICAO**

AERODROME ELEV 23 ft
HEIGHTS RELATED TO
THR RWY 15R - ELEV 23 ft

SEOUL APP	119.75
	119.1
INCHEON TWR	118.2
	118.8

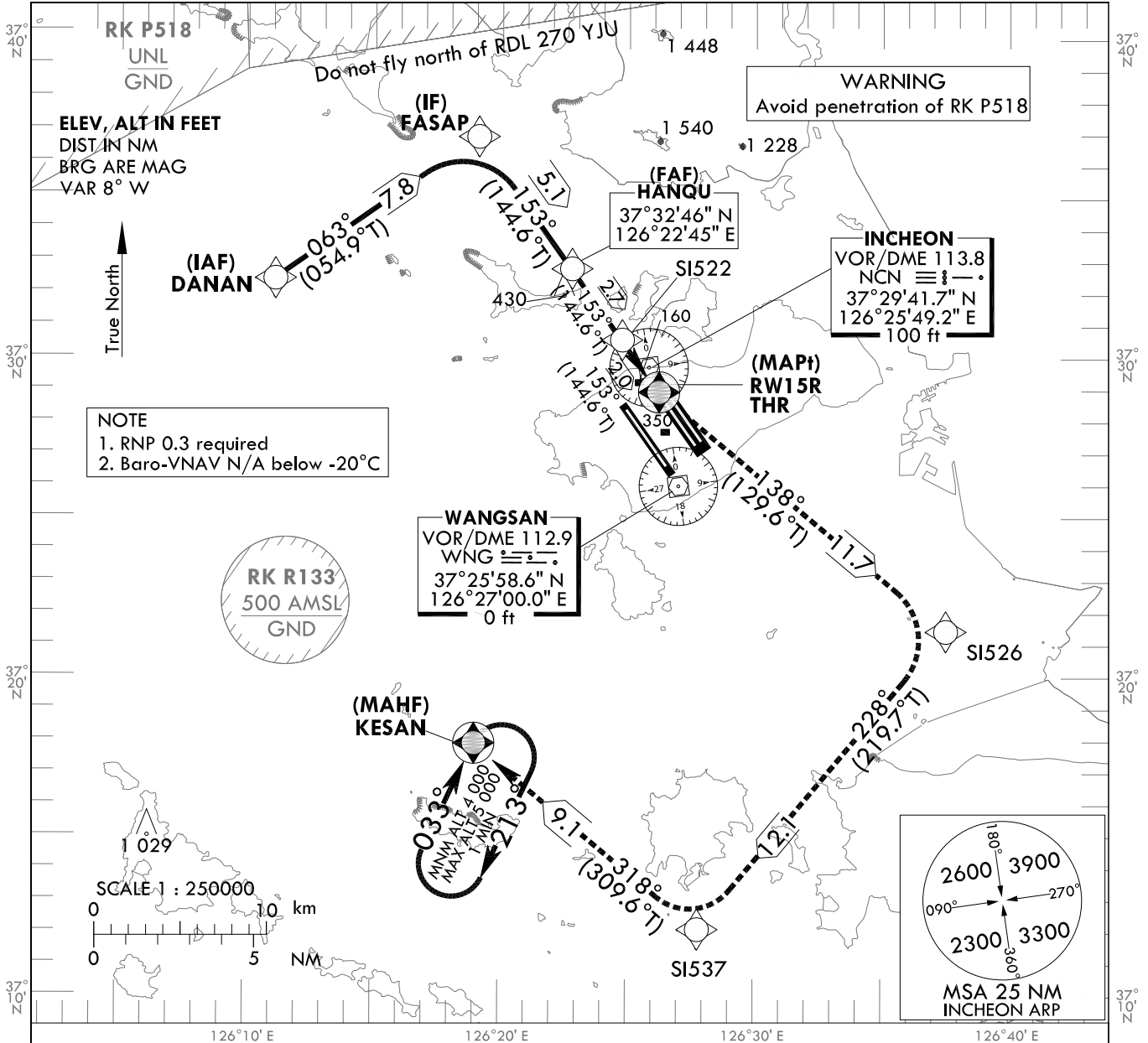
**SEOUL/Incheon Intl(RKSI)
RNAV(GNSS)
RWY 15R**

Note : Approach under ICAO Flight Procedures.

126°20' E

126°30' E

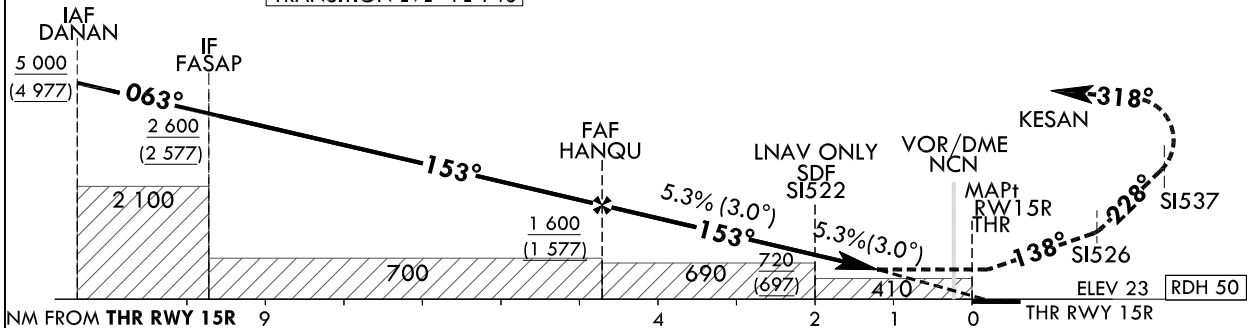
126°40' E



TRANSITION ALT 14 000
TRANSITION LVL FL 140

MISSED APPROACH

Climb to 4 000 ft. Track to SI526, SI537 and KESAN. Hold as published.



CATEGORY		MDA(H)/DA(H)	A	B	C	D	Knots						
LNAV	FULL	540 (517)		1 600 m			Rate of descent	V/V fpm	323	485	647	809	970
	ALS INOP			2 400 m									
LNAV/VNAV	FULL	430 (407)		1 200 m			* Timing Not authorized for defining MAPt. * Circling Not authorized.						
	ALS INOP			1 900 m									

Change : Amended phrases.

SEOUL/Incheon Intl(RKSI)
RNAV(GNSS)
RWY 15R

AERONAUTICAL DATA TABULATION

Instrument Approach Procedure Coding Tables

RNAV(GNSS) RWY 15R

Serial Number	Path Descriptor	Waypoint Identifier	Fly-over	Course/Track °M(T)	Distance (NM)	Turn direction	Altitude (ft)	Speed (kt)	Coordinates	VPA/TCH	Navigation specification	Remarks
001	IF	DANAN	-	-	-	-	+5 000	-	373226.0 N 1261104.0 E (R 291 NCN/D12, R 305 WNG/D14)	-	RNP APCH	IAF
002	TF	FASAP	-	063 (054.9)	7.8	-	+2 600	-	373653.8 N 1261903.3 E (R 331 NCN/D9, R 338 WNG/D13)	-	RNP APCH	IF
003	TF	HANGU	-	153 (144.6)	5.1	-	+1 600	-	373245.7 N 1262244.8 E (R 329 NCN/D4, R 341 WNG/D8)	-	RNP APCH	FAF
004	TF	S1522	-	153 (144.6)	2.7	-	+720	-	373032.4 N 1262443.6 E (R 322 NCN/D1, R 346 WNG/D5)	-	RNP APCH	SDF
005	TF	RW15R	Y	153 (144.6)	2.0	-	+540	-	372854.44 N 1262610.82 E (R 168 NCN/D1, R 355 WNG/D3)	-3.01/50	RNP APCH	MAPt
006	TF	S1526	-	138 (129.6)	11.7	-	-	-	372125.5 N 1263729.3 E (R 140 NCN/D12, R 126 WNG/D10)	-	RNP APCH	-
007	TF	S1537	-	228 (219.8)	12.1	-	-	-	371203.9 N 1262745.9 E (R 183 NCN/D18, R 185 WNG/D14)	-	RNP APCH	-
008	TF	KESAN	Y	318 (309.6)	9.1	-	+4 000	-	371753.0 N 1261858.0 E (R 213 NCN/D13, R 226 WNG/D10)	-	RNP APCH	-
009	HIM	KESAN	Y	033 (025.0)	-	R	-5 000 +4 000	-	371753.0 N 1261858.0 E (R 213 NCN/D13, R 226 WNG/D10)	-	RNP APCH	¹ min (Outbound timing)

Change : Amended phrases.

INSTRUMENT APPROACH CHART - ICAO

AERODROME ELEV 23 ft
HEIGHTS RELATED TO
THR RWY 16 - ELEV 23 ft

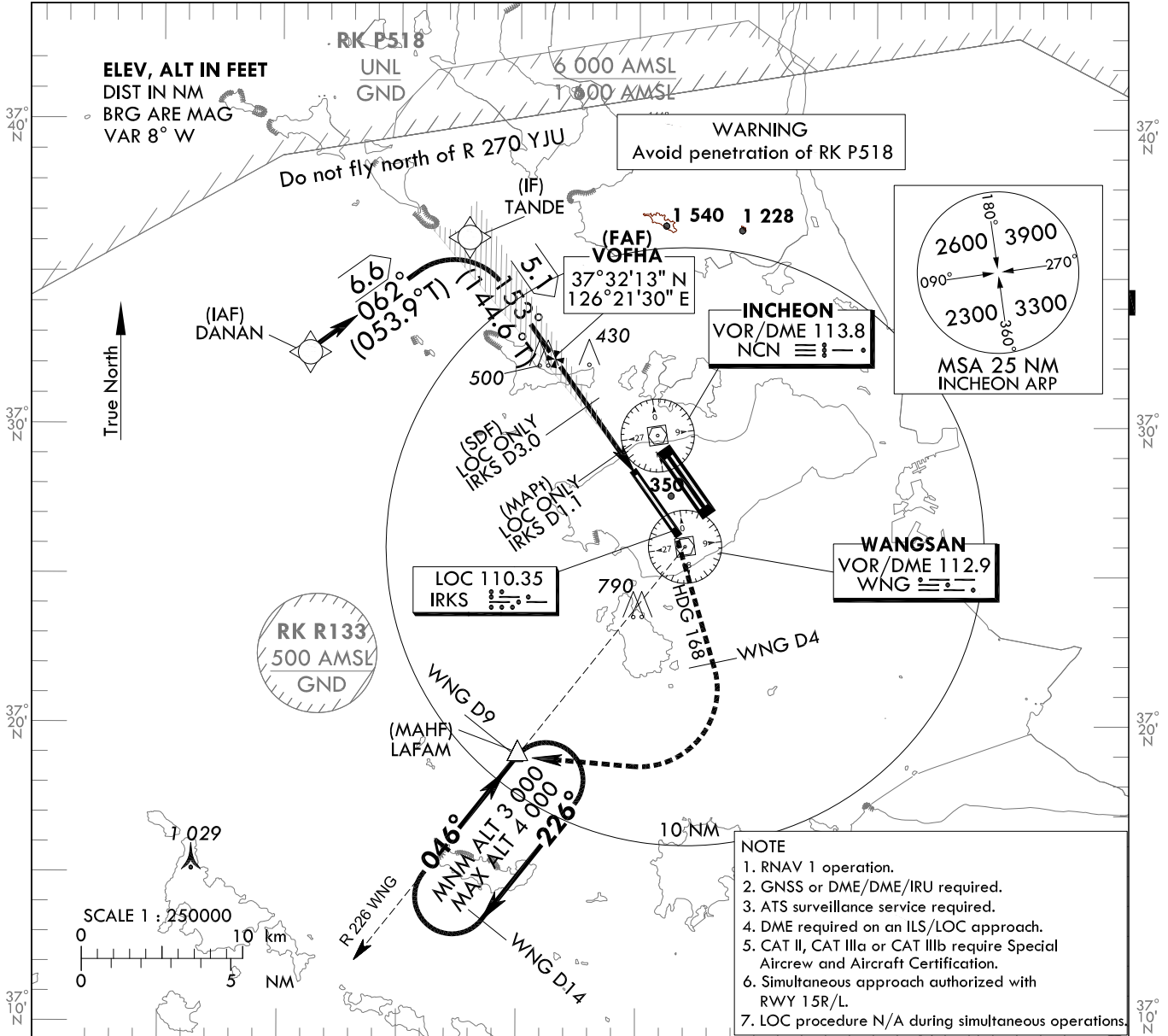
SEOUL APP 119.75
119.1
INCHEON TWR 118.2
118.8

SEOUL/Incheon Intl(RKSI) ILS or LOC RWY 16
CAT II & III

Note : Approach under ICAO Flight Procedures.

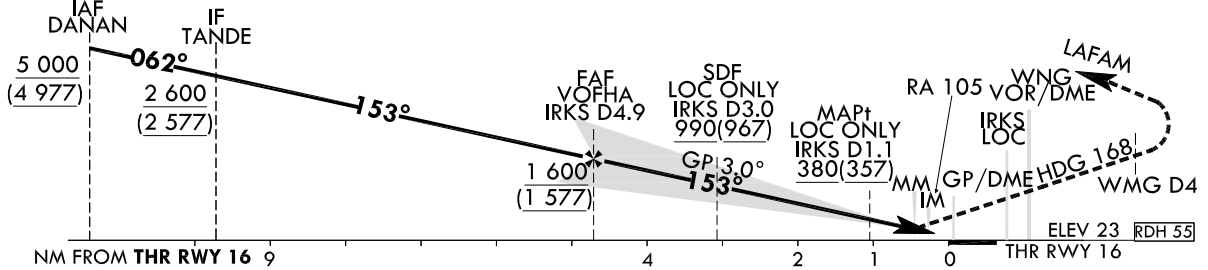
126°20' E

126°40' E



- NOTE**
1. RNAV 1 operation.
 2. GNSS or DME/DME/IRU required.
 3. ATS surveillance service required.
 4. DME required on an ILS/LOC approach.
 5. CAT II, CAT IIIa or CAT IIIb require Special Aircrew and Aircraft Certification.
 6. Simultaneous approach authorized with RWY 15R/L.
 7. LOC procedure N/A during simultaneous operations.

TRANSITION ALT 14 000	RECOMMENDED PROFILE	DME IRKS	4	3	2
TRANSITION LVL FL 140	Final Approach Gradient 5.24%, 318 ft/NM	ALT(HGT)	1 310 (1 287)	986 (963)	663 (640)



CATEGORY	DA(DH)/MDA(MDH)	A					B					C					D					DL					
		A					B					C					D					DL					
Straight-in	CAT-I (CG 2.5%)	FULL	436 (413)					1 200 m					1 900 m					1 200 m					900 m				
		ALS INOP	223 (200)					RVR 550 m, VIS 800 m					1 600 m					1 600 m					1 600 m				
	CAT-I (CG 4.0%)	FULL	380 (357)					300 m					300 m ¹⁾ /350 m					175 m					75 m ²⁾ /125 m				
		ALS INOP	-					-					-					-									
	LOC	GP INOP GP & ALS INOP	123(100)					-					-					-					-				
	CAT II		-					-					-					-					-				

MISSED APPROACH
Climb to 500 ft on RWY Heading then RIGHT turn on Heading 168° to WNG 4 DME, continue climb to 3 000 ft RIGHT turn direct to LAFAM. Hold as published.

NOTE

1. Missed approach turn limited to 210 kt IAS maximum.
2. Missed approach minimum climb gradient of 2.5% to 3 000 ft (DH 413), 4% to 3 000 ft (DH 200 or 100).

* Timing Not authorized for defining MAPt.
* Circling Not authorized.

1) For CAT D/DL aeroplane conducting an autoland.
2) Aeroplane use Fail-operational system.

Change : Information of MSA(2100 → 2300).

SEOUL/Incheon Intl(RKSI)
ILS or LOC RWY 16
CAT II & III

AERONAUTICAL DATA TABULATION

ILS/LOC Approach to RWY 16 from DANAN		
Fix / Point		Coordinates
DANAN(IAF)		37°32'26.0" N 126°11'04.0" E
TANDE(IF)	BRG 061.75°/6.64 NM	37°36'21.0" N 126°17'48.8" E
VOFHA (FAF)	BRG 152.51°/4.90 NM IRKS	37°32'12.9" N 126°21'30.4" E
D3.0 IRKS(SDF LOC ONLY)	BRG 152.51°/3.00 NM IRKS	37°30'40.7" N 126°22'52.6" E
D1.1 IRKS(MAPt LOC ONLY)	BRG 152.51°/1.10 NM IRKS	37°29'07.6" N 126°24'15.5" E
THR RWY16		37°28'22.11" N 126°24'56.05" E
IRKS DME		37°28'11.4" N 126°24'59.7" E
WNG VOR/DME		37°25'58.6" N 126°27'00.0" E
Climb to 500 ft	HDG 153	-
D4 WNG		-
LAFAM	BRG 282.42°/9.00 NM WNG	37°18'55.0" N 126°19'59.0" E

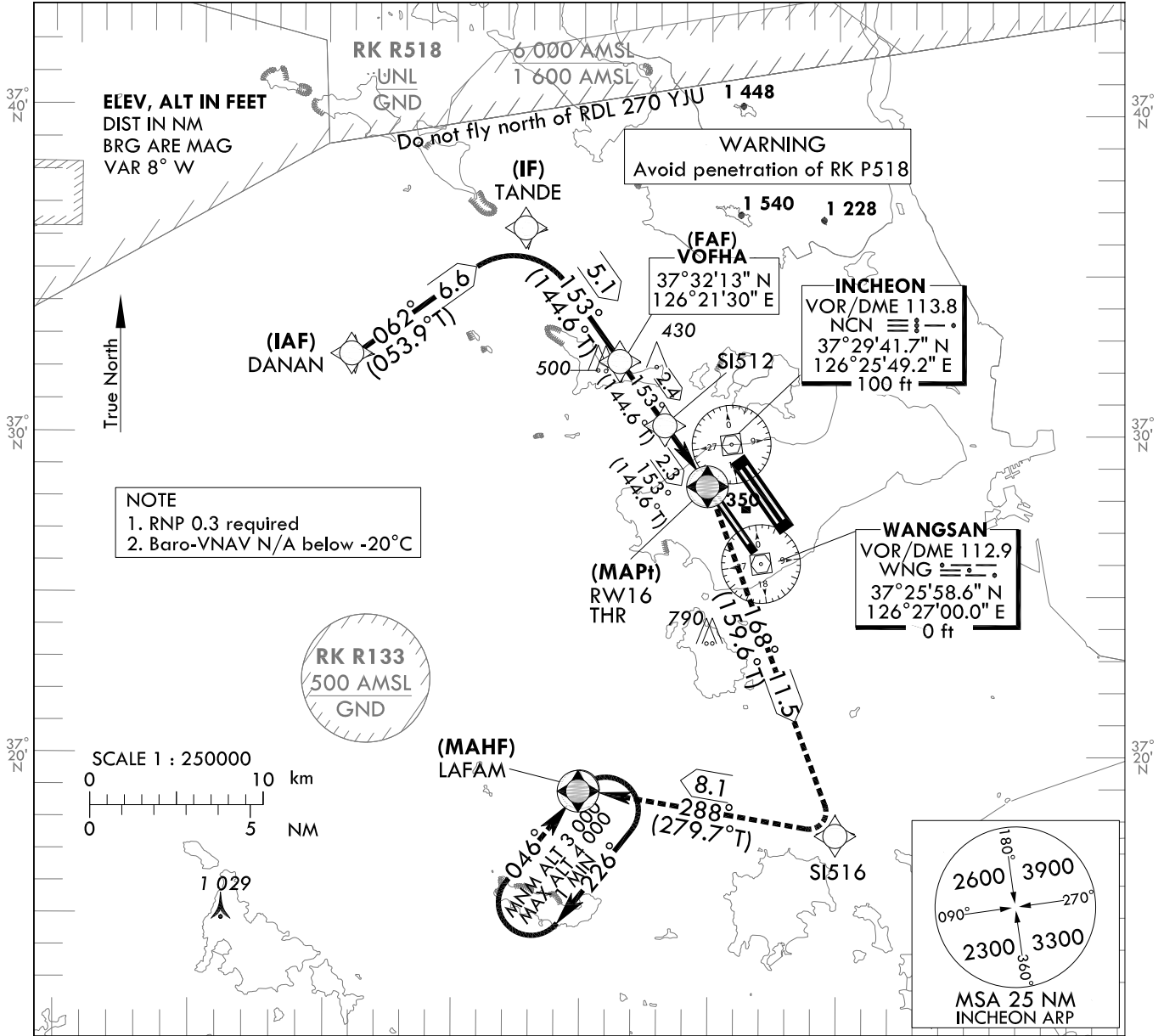
**INSTRUMENT
APPROACH
CHART - ICAO**

AERODROME ELEV 23 ft
HEIGHTS RELATED TO
THR RWY 16 - ELEV 23 ft

SEOUL APP 119.75
119.1
INCHEON TWR 118.2
118.8

**SEOUL/Incheon Intl(RKSI)
RNAV(GNSS)
RWY 16**

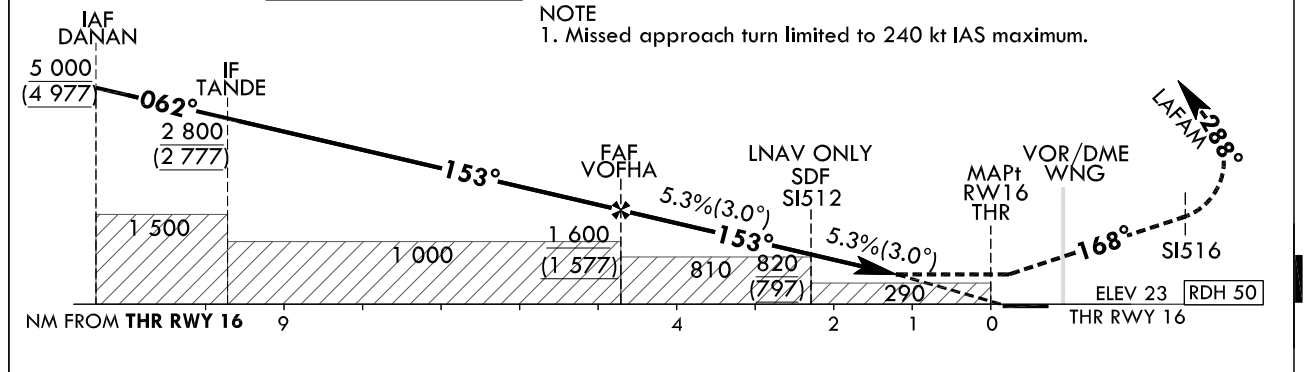
Note : Approach under ICAO Flight Procedures.



126°10' E 126°20' E 126°30' E

MISSED APPROACH
Climb to 3 000 ft. Track to SI516 and LAFAM. Hold as published.

NOTE
1. Missed approach turn limited to 240 kt IAS maximum.



CATEGORY		MDA(H)/DA(H)	A	B	C	D	Knots						
LNAV	FULL	520 (497)		1 500 m			Rate of descent	V/V fpm	324	486	648	810	972
	ALS INOP		2 300 m										
LNAV/VNAV	FULL	430 (407)		1 200 m			* Timing Not authorized for defining MAPt. * Circling Not authorized.						
	ALS INOP		1 900 m										

Change : Amended phrases.

SEOUL/Incheon Intl(RKSI)
RNAV(GNSS)
RWY 16

AERONAUTICAL DATA TABULATION

Instrument Approach Procedure Coding Tables

RNAV(GNSS) RWY 16

Serial Number	Path Descriptor	Waypoint Identifier	Fly-over	Course/Track °M(°T)	Distance (NM)	Turn direction	Altitude (ft)	Speed (kt)	Coordinates	VPA/TCH	Navigation specification	Remarks
001	IF	DANAN	-	-	-	-	+5 000	-	373226.0 N 1261104.0 E (R 291 NCN/D12, R 305 WNG/D14)	-	RNP APCH	IAF
002	TF	TANDE	-	062 (053.9)	6.6	-	+2 800	-	373621.0 N 1261748.8 E (R 324 NCN/D9, R 333 WNG/D13)	-	RNP APCH	IF
003	TF	VOFHA	-	153 (144.6)	5.1	-	+1 600	-	373212.9 N 1262130.4 E (R 314 NCN/D4, R 333 WNG/D8)	-	RNP APCH	FAF
004	TF	SI512	-	153 (144.6)	2.4	-	+820	-	373014.8 N 1262315.7 E (R 293 NCN/D2, R 333 WNG/D5)	-	RNP APCH	SDF
005	TF	RW16	Y	153 (144.6)	2.3	-	+520	-	372822.1 N 1262456.0 E (R 216 NCN/D2, R 333 WNG/D3)	-3.01/50	RNP APCH	MAPt
006	TF	SI516	-	168 (159.6)	11.5	-	-	-240	371734.0 N 1262957.5 E (R 173 NCN/D13, R 172 WNG/D9)	-	RNP APCH	-
007	TF	LAFAM	Y	288 (279.7)	8.1	-	+3 000	-240	371855.0 N 1261959.0 E (R 211 NCN/D12, R 226 WNG/D9)	-	RNP APCH	-
008	HM	LAFAM	Y	046 (038.4)	-	R	-4 000 +3 000	-	371855.0 N 1261959.0 E (R 211 NCN/D12, R 226 WNG/D9)	-	RNP APCH	1 min (Outbound timing)

Change : Amended phrases.

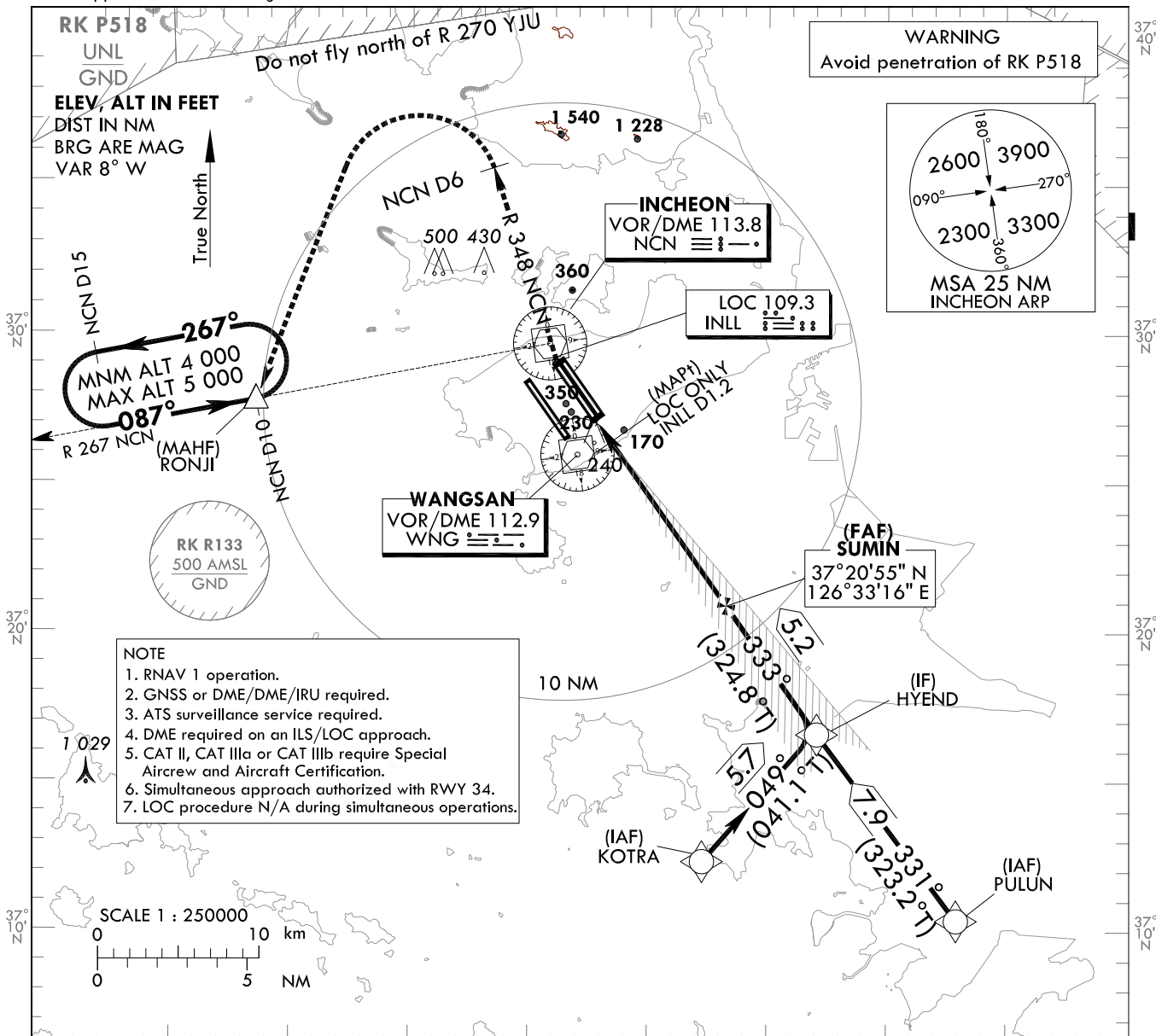
**INSTRUMENT
APPROACH
CHART - ICAO**

AERODROME ELEV 23 ft
HEIGHTS RELATED TO
THR RWY 33L - ELEV 23 ft

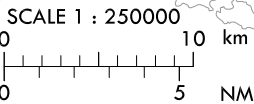
SEOUL APP 119.75
119.1
INCHEON TWR 118.2
118.8

**SEOUL/Incheon Intl(RKSI)
ILS or LOC RWY 33L
CAT II & III**

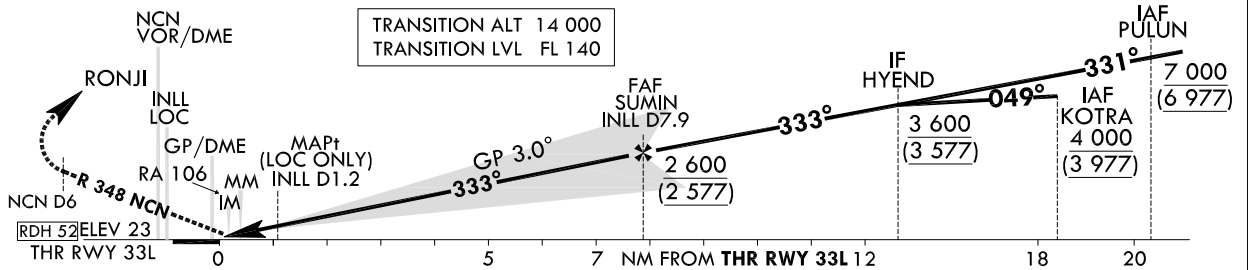
Note : Approach under ICAO Flight Procedures.



NOTE
1. RNAV 1 operation.
2. GNSS or DME/DME/IRU required.
3. ATS surveillance service required.
4. DME required on an ILS/LOC approach.
5. CAT II, CAT IIIa or CAT IIIb require Special Aircrew and Aircraft Certification.
6. Simultaneous approach authorized with RWY 34.
7. LOC procedure N/A during simultaneous operations.



RECOMMENDED PROFILE		DME INLL	7	6	5	4	3	2
Final Approach Gradient 5.35%, 325 ft/NM		ALT(HGT)	2 299 (2 276)	1 974 (1 951)	1 649 (1 626)	1 323 (1 300)	998 (975)	673 (650)



CATEGORY	DA(DH)/MDA(MDH)	A					B		C		D		DL	
		CAT-I (CG 2.5%)		CAT-I (CG 4.0%)		LOC		CAT II		CAT IIIa		CAT IIIb		
Straight-in	455 (432)	FULL	1 300 m		2 000 m		RVR 550 m, VIS 800 m		1 200 m		1 200 m		1 900 m	
		ALS INOP	223 (200)		1 200 m		1 200 m		1 200 m		1 900 m		1 900 m	
	430 (407)	FULL	300 m		300 m ¹⁾ /350 m		175 m		75 m ²⁾ /125 m		-		-	
		ALS INOP	123(100)		300 m		300 m ¹⁾ /350 m		175 m		75 m ²⁾ /125 m		-	
	-		300 m		300 m ¹⁾ /350 m		175 m		75 m ²⁾ /125 m		-		-	
	-		300 m		300 m ¹⁾ /350 m		175 m		75 m ²⁾ /125 m		-		-	

MISSED APPROACH
Climb to 500 ft on RWY heading then turn RIGHT to intercept and follow R 348 NCN to 6 DME, continue climb to 4 000 ft LEFT turn direct to RONJI. Hold as published.
NOTE
1. Missed approach turn limited to 210 kt IAS maximum.
2. Missed approach minimum climb gradient of 2.5% to 4 000 ft(DH 432), 4% to 2 000 ft(DH 200 or 100).
* Timing Not authorized for defining MAPt.
* Circling Not authorized.

1) For CAT D/DL aeroplane conducting an autoland.
2) Aeroplane use Fail-operational system.

Change : Information of MSA(2100 → 2300).

SEOUL/Incheon Intl(RKSI)
ILS or LOC RWY 33L
CAT II & III

AERONAUTICAL DATA TABULATION

ILS/LOC Approach to RWY 33L from PULUN to HYEND(IF)	
Fix / Point	Coordinates
PULUN(IAF)	37°10'22.2" N 126°42'55.7" E
HYEND(IF)	37°16'41.2" N 126°37'01.0" E

ILS/LOC Approach to RWY 33L from KOTRA to HYEND(IF)	
Fix / Point	Coordinates
KOTRA(IAF)	37°12'21.3" N 126°32'17.4" E
HYEND(IF)	37°16'41.2" N 126°37'01.0" E

ILS/LOC Approach to RWY 33L from HYEND(IF) to MAHF	
Fix / Point	Coordinates
SUMIN(FAF) BRG 332.69°/7.92 NM INLL	37°20'55.1" N 126°33'16.4" E
D1.2 INLL(MAPt) (LOC ONLY) BRG 332.69°/1.20 NM INLL	37°26'24.4" N 126°28'24.3" E
THR RWY 33L	37°27'15.21" N 126°27'39.08" E
INLL DME	37°27'25.4" N 126°27'36.0" E
NCN VOR/DME	37°29'47.1" N 126°25'49.2" E
Climb to 500 ft HDG 333	-
D6 NCN	-
RONJI BRG 211.55°/10.00 NM NCN	37°27'47.0" N 126°13'29.0" E

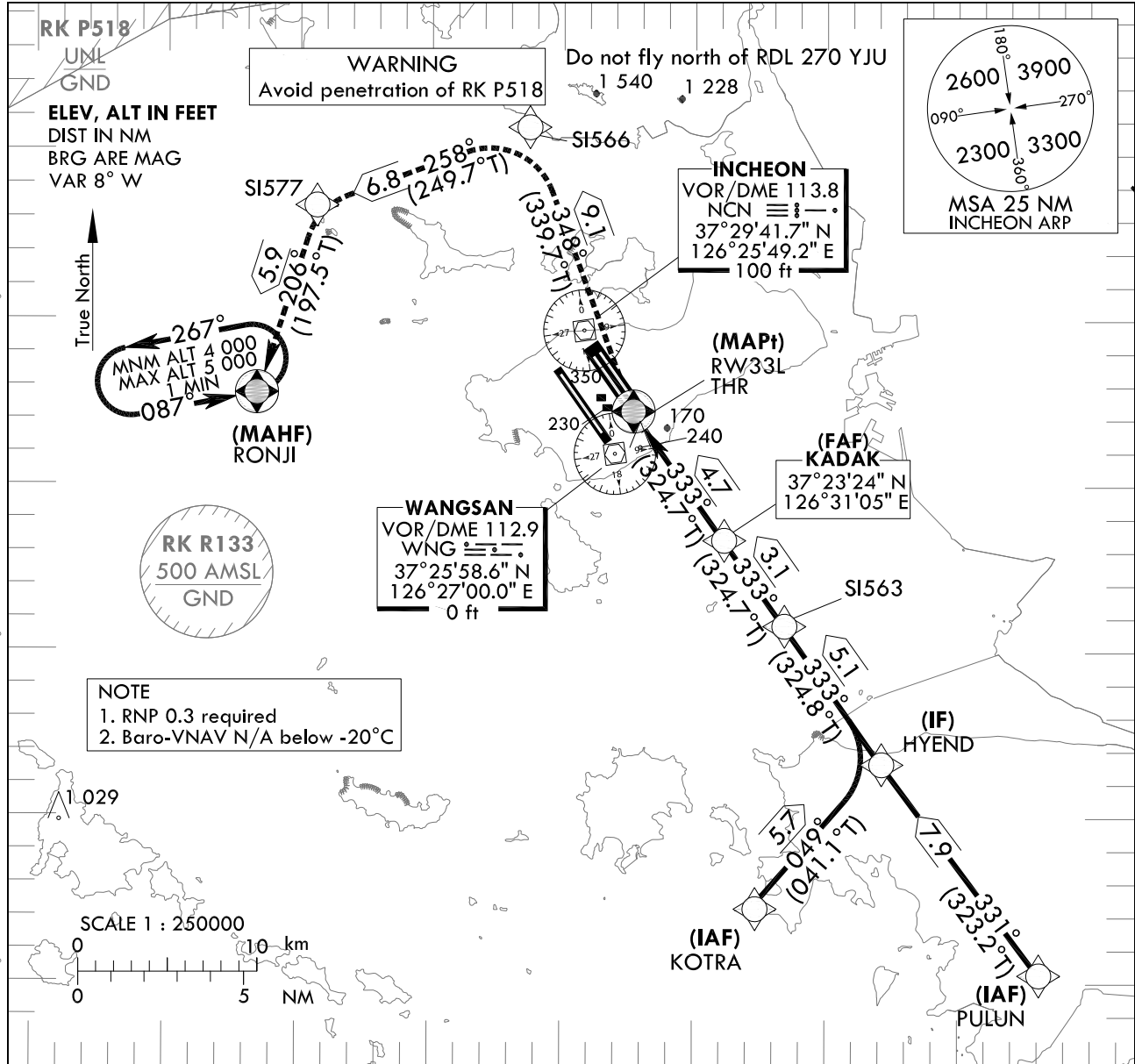
**INSTRUMENT
APPROACH
CHART - ICAO**

AERODROME ELEV 23 ft
HEIGHTS RELATED TO
THR RWY 33L - ELEV 23 ft

SEOUL APP 119.75
119.1
INCHEON TWR 118.2
118.8

**SEOUL/Incheon Intl(RKSI)
RNAV(GNSS)
RWY 33L**

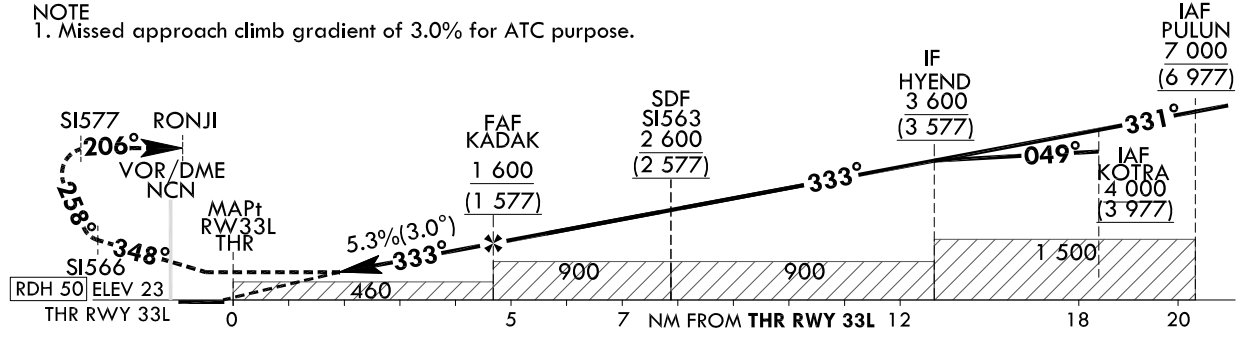
Note : Approach under ICAO Flight Procedures. 126°20' E



MISSED APPROACH

Climb to 4 000 ft. Track to SI566, SI577 and RONJI. Hold as published.

NOTE
1. Missed approach climb gradient of 3.0% for ATC purpose.



CATEGORY		MDA(H)/DA(H)	A	B	C	D	Knots						
LNAV	FULL	510 (487)		1 500 m			Rate of descent	V/V fpm	323	485	647	809	970
	ALS INOP			2 300 m									
LNAV/VNAV	FULL	430 (407)		1 200 m			* Timing Not authorized for defining MAPt. * Circling Not authorized.						
	ALS INOP			1 900 m									

Change : Amended phrases.

SEOUL/Incheon Intl(RKSI)
RNAV(GNSS)
RWY 33L

AERONAUTICAL DATA TABULATION

Instrument Approach Procedure Coding Tables

RNAV(GNSS) RWY 33L - via PULLUN to HYEND(IF)

Serial Number	Path Descriptor	Waypoint Identifier	Fly-over	Course/Track °M(°T)	Distance (NM)	Turn direction	Altitude (ft)	Speed (kt)	Coordinates	VPA/TCH	Navigation specification	Remarks
001	IF	PULLUN	-	-	-	-	+7 000	-	371022.2 N 1264255.7 E (R 153 NCN/D24, R 149 WNG/D20)	-	RNP APCH	IAF
002	TF	HYEND	-	331 (323.2)	7.9	-	+3 600	-	371641.2 N 1263701.0 E (R 153 NCN/D16, R 147 WNG/D12)	-	RNP APCH	IF

RNAV(GNSS) RWY 33L - via KOTRA to HYEND(IF)

Serial Number	Path Descriptor	Waypoint Identifier	Fly-over	Course/Track °M(°T)	Distance (NM)	Turn direction	Altitude (ft)	Speed (kt)	Coordinates	VPA/TCH	Navigation specification	Remarks
001	IF	KOTRA	-	-	-	-	+4 000	-	371221.3 N 1263217.4 E (R 171 NCN/D18, R 171 WNG/D14)	-	RNP APCH	IAF
002	TF	HYEND	-	049 (041.1)	5.7	-	+3 600	-	371641.2 N 1263701.0 E (R 153 NCN/D16, R 147 WNG/D12)	-	RNP APCH	IF

RNAV(GNSS) RWY 33L - via HYEND(IF) to MAHF

Serial Number	Path Descriptor	Waypoint Identifier	Fly-over	Course/Track °M(°T)	Distance (NM)	Turn direction	Altitude (ft)	Speed (kt)	Coordinates	VPA/TCH	Navigation specification	Remarks
002	TF	HYEND	-	-	-	-	+3 600	-	371641.2 N 1263701.0 E (R 153 NCN/D16, R 147 WNG/D12)	-	RNP APCH	IF
003	TF	S1563	-	333 (324.8)	5.1	-	+2 600	-	372049.5 N 1263321.4 E (R 154 NCN/D11, R 143 WNG/D7)	-	RNP APCH	SDF
004	TF	KADAK	-	333 (324.7)	3.1	-	+1 600	-	372323.8 N 1263104.6 E (R 154 NCN/D8, R 136 WNG/D4)	-	RNP APCH	FAF
005	TF	RW33L	Y	333 (324.7)	4.7	-	+510	-	372715.2 N 1262739.08 E (R 157 NCN/D3, R 030 WNG/D1)	-3.01/50	RNP APCH	MAPt
006	TF	S1566	-	348 (339.7)	9.1	-	-	-	373545.5 N 1262342.2 E (R 352 NCN/D6, R 333 WNG/D10)	-	RNP APCH	-
007	TF	S1577	-	258 (249.7)	6.8	-	-	-	373323.8 N 1261542.3 E (R 303 NCN/D9, R 317 WNG/D12)	-	RNP APCH	-
008	TF	RONJI	Y	206 (197.5)	5.9	-	+4 000	-	372747.0 N 1261329.0 E (R 267 NCN/D10, R 288 WNG/D11)	-	RNP APCH	-
009	H/M	RONJI	Y	087 (078.9)	-	L	-5 000 +4 000	-	372747.0 N 1261329.0 E (R 267 NCN/D10, R 288 WNG/D11)	-	RNP APCH	1 min (Outbound timing)

Change : Amended phrases.

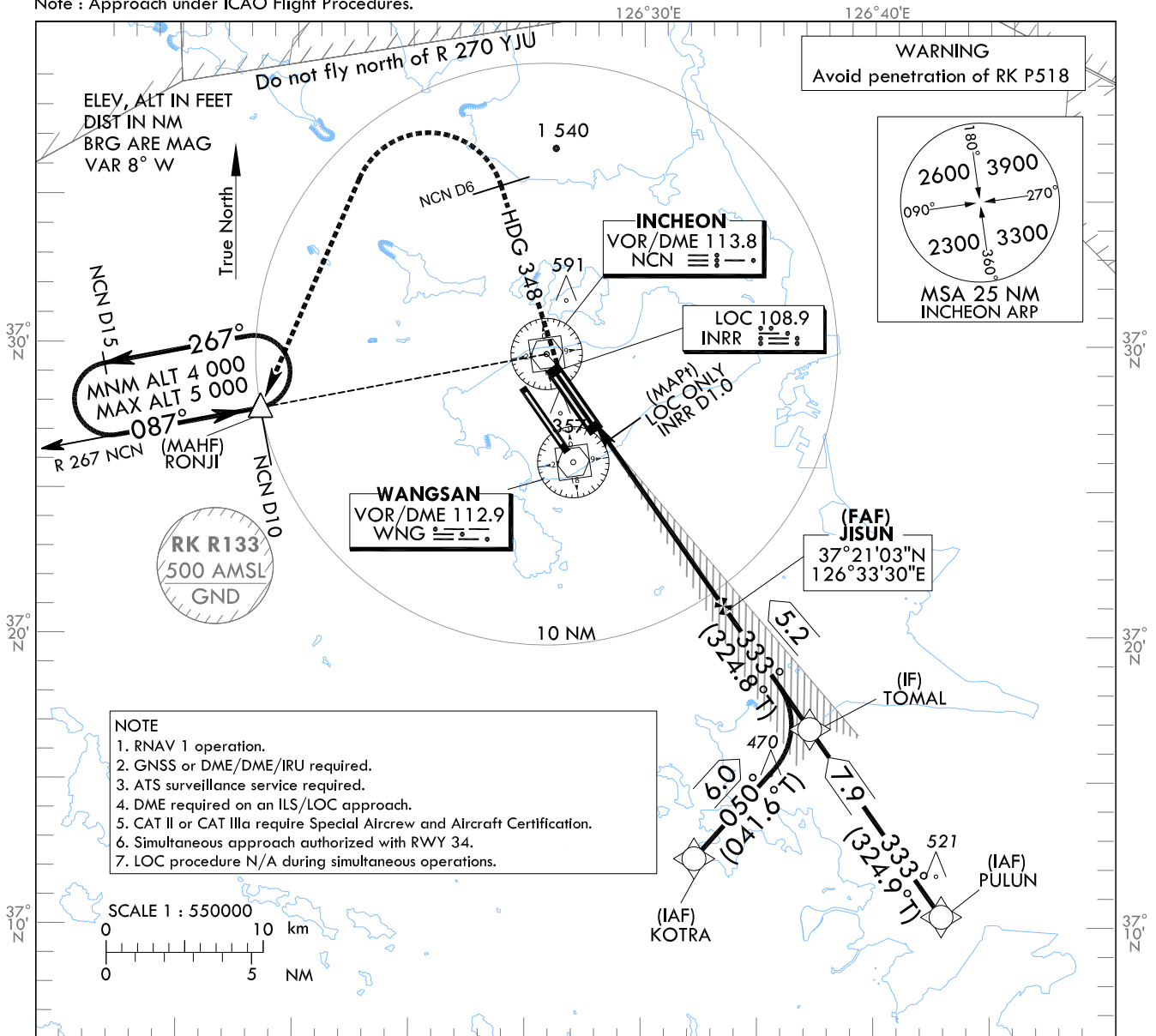
**INSTRUMENT
APPROACH
CHART - ICAO**

AERODROME ELEV 23 ft
HEIGHTS RELATED TO
THR RWY 33R - ELEV 23 ft

SEOUL APP 119.75
119.1
INCHEON TWR 118.2
118.8

SEOUL/Incheon Intl(RKSI)
ILS or LOC RWY 33R
CAT II & III

Note : Approach under ICAO Flight Procedures.



NOTE
1. RNAV 1 operation.
2. GNSS or DME/DME/IRU required.
3. ATS surveillance service required.
4. DME required on an ILS/LOC approach.
5. CAT II or CAT IIIa require Special Aircrew and Aircraft Certification.
6. Simultaneous approach authorized with RWY 34.
7. LOC procedure N/A during simultaneous operations.

RECOMMENDED PROFILE		DME INRR						TRANSITION ALT 14 000	
Final Approach Gradient 5.35%, 325 ft ft/NM		7	6	5	4	3	2	TRANSITION LVL FL 140	
		ALT(HGT)	2 299	1 974	1 649	1 323	998	673	
			2 276	1 951	1 626	1 300	(975)	(650)	
CATEGORY		DA(DH)/MDA(MDH)	A	B	C	D	DL	MISSED APPROACH	
Straight -in	CAT-I (CG 2.5%)	FULL 461 (438)			1 300 m			Climb to 500 ft on RWY heading then turn RIGHT on Heading 348° to NCN 6 DME, continue climb to 4 000 ft LEFT turn direct to RONJI. Hold as published.	
		ALS INOP (200)			2 000 m			NOTE	
	CAT-I (CG 4.0%)	FULL 223 (200)			RVR 550 m, VIS 800 m			1. Missed approach turn limited to 210 kt IAS maximum.	
		ALS INOP (407)			1 200 m			2. Missed approach minimum climb gradient of 2.5% to 4 000 ft (DH 438), 4% to 2 000ft (DH 200 or 100).	
	LOC	FULL 430 (407)			1 200 m			1) For CAT D/DL aeroplane conducting an autoland.	
		ALS INOP			1 900 m			2) Aeroplane use fail-operational system.	
	CAT II	123(100)			300 m		300 m ¹⁾ / 350 m	* Timing Not authorized for defining MAPt.	
	CAT IIIa	-			175 m			* Circling Not authorized.	
	CAT IIIb	-			75 m ²⁾ / 125 m				

Change : Establishment of CAT IIIb.

SEOUL/Incheon Intl(RKSI)
ILS or LOC RWY 33R
CAT II & III

AERONAUTICAL DATA TABULATION

ILS/LOC Approach to RWY 33R from PULUN to TOMAL(IF)	
Fix / Point	Coordinates
PULUN(IAF)	37°10'22.2" N 126°42'55.7" E
TOMAL(IF)	37°16'49.0" N 126°37'14.8" E

ILS/LOC Approach to RWY 33R from KOTRA to TOMAL(IF)	
Fix / Point	Coordinates
KOTRA(IAF)	37°12'21.3" N 126°32'17.4" E
TOMAL(IF)	37°16'49.0" N 126°37'14.8" E

ILS/LOC Approach to RWY 33R from TOMAL(IF) to MAHF	
Fix / Point	Coordinates
JISUN(FAF) BRG 332.69°/7.92NM INRR	37°21'02.8" N 126°33'30.1" E
D1.0 INRR(MAPt LOC ONLY) BRG 332.69°/0.98NM INRR	37°26'43.0" N 126°28'28.4" E
THR RWY 33R	37°27'22.97" N 126°27'52.82" E
INRR DME	37°27'33.2" N 126°27'49.7" E
NCN VOR/DME	37°29'41.7" N 126°25'49.2" E
Climb to 500 ft HDG 333	-
D6 NCN HDG 348	-
RONJI BRG 267.27°/10NM NCN	37°27'47.0" N 126°13'29.0" E

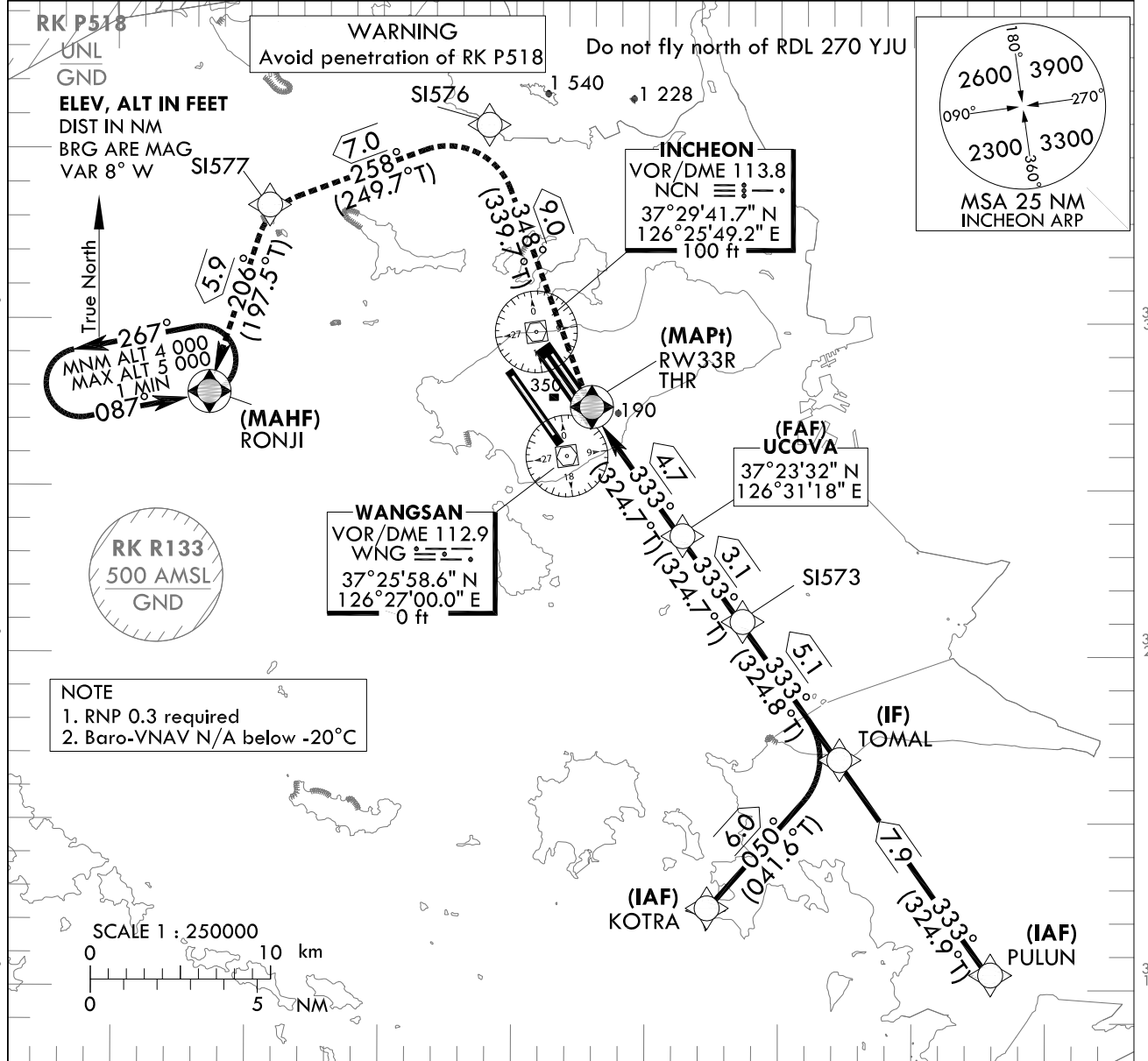
**INSTRUMENT
APPROACH
CHART - ICAO**

AERODROME ELEV 23 ft
HEIGHTS RELATED TO
THR RWY 33R - ELEV 23 ft

SEOUL APP 119.75
119.1
INCHEON TWR 118.2
118.8

SEOUL/Incheon Intl(RKSI)
RNAV(GNSS)
RWY 33R

Note : Approach under ICAO Flight Procedures.



NOTE
1. RNP 0.3 required
2. Baro-VNAV N/A below -20°C

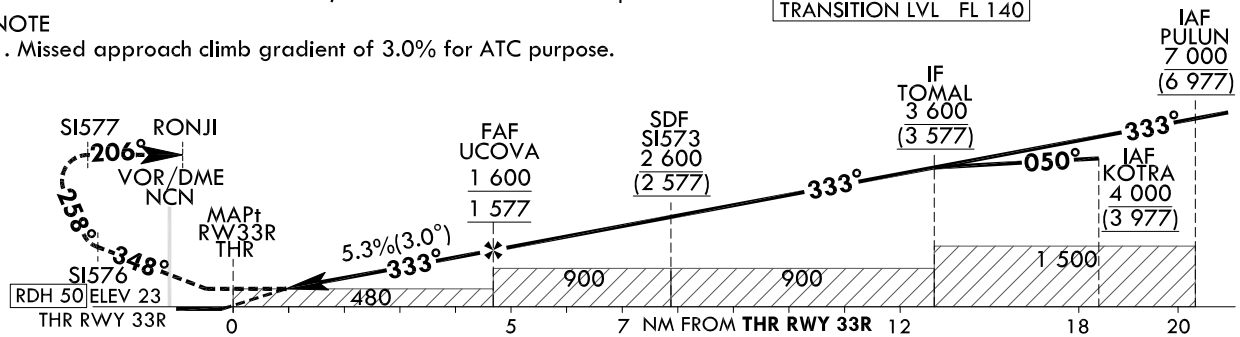
MISSED APPROACH

Climb to 4 000 ft. Track to SI576, SI577 and RONJI. Hold as published.

NOTE

1. Missed approach climb gradient of 3.0% for ATC purpose.

TRANSITION ALT 14 000
TRANSITION LVL FL 140



CATEGORY		MDA(H)/DA(H)	A	B	C	D	Knots					
LNAV	FULL	480 (457)		1 400 m			Rate of descent V/V fpm	60	90	120	150	180
	ALS INOP			2 100 m				323	485	647	809	970
LNAV/VNAV	FULL	430 (407)		1 200 m			* Timing Not authorized for defining MAPt. * Circling Not authorized.					
	ALS INOP			1 900 m								

Change : Amended phrases.

SEOUL/Incheon Intl(RKSI)
RNAV(GNSS)
RWY 33R

AERONAUTICAL DATA TABULATION

Instrument Approach Procedure Coding Tables

RNAV(GNSS) RWY 33R - via PULUN to TOMAL(IF)

Serial Number	Path Descriptor	Waypoint Identifier	Fly-over	Course/Track °M(°T)	Distance (NM)	Turn direction	Altitude (ft)	Speed (kt)	Coordinates	VPA/TCH	Navigation specification	Remarks
001	IF	PULUN	-	-	-	-	+7 000	-	371022.2 N 1264255.7 E (R 153 NCN/D24, R 149 WNG/D20)	-	RNP APCH	IAF
002	TF	TOMAL	-	333 (324.9)	7.9	-	+3 600	-	371649.0 N 1263714.8 E (R 153 NCN/D16, R 146 WNG/D12)	-	RNP APCH	IF

RNAV(GNSS) RWY 33R - via KOTRA toTOMAL(IF)

Serial Number	Path Descriptor	Waypoint Identifier	Fly-over	Course/Track °M(°T)	Distance (NM)	Turn direction	Altitude (ft)	Speed (kt)	Coordinates	VPA/TCH	Navigation specification	Remarks
001	IF	KOTRA	-	-	-	-	+4 000	-	371221.3 N 1263217.4 E (R 171 NCN/D18, R 171 WNG/D14)	-	RNP APCH	IAF
002	TF	TOMAL	-	050 (041.6)	6.0	-	+3 600	-	371649.0 N 1263714.8 E (R 153 NCN/D16, R 146 WNG/D12)	-	RNP APCH	IF

RNAV(GNSS) RWY 33R - via TOMAL(IF) to MAHF

Serial Number	Path Descriptor	Waypoint Identifier	Fly-over	Course/Track °M(°T)	Distance (NM)	Turn direction	Altitude (ft)	Speed (kt)	Coordinates	VPA/TCH	Navigation specification	Remarks
002	TF	TOMAL	-	-	-	-	+3 600	-	371649.0 N 1263714.8 E (R 153 NCN/D16, R 146 WNG/D12)	-	RNP APCH	IF
003	TF	S1573	-	333 (324.8)	5.1	-	+2 600	-	372057.2 N 1263335.1 E (R 153 NCN/D11, R 142 WNG/D7)	-	RNP APCH	SDF
004	TF	UCOVA	-	333 (324.7)	3.1	-	+1 600	-	372331.5 N 1263118.4 E (R 153 NCN/D8, R 133 WNG/D4)	-	RNP APCH	FAF
005	TF	RW33R	Y	333 (324.7)	4.7	-	+480	-	372722.97 N 1262752.82 E (R 153 NCN/D3, R 034 WNG/D2)	-3.01/50	RNP APCH	MAPt
006	TF	S1576	-	348 (339.7)	9.0	-	-	-	373550.0 N 1262357.5 E (R 354 NCN/D6, R 354 WNG/D10)	-	RNP APCH	-
007	TF	S1577	-	258 (249.7)	7.0	-	-	-	373323.8 N 1261542.3 E (R 303 NCN/D9, R 317 WNG/D12)	-	RNP APCH	-
008	TF	RONJI	Y	206 (197.5)	5.9	-	+4 000	-	372747.0 N 1261329.0 E (R 267 NCN/D10, R 288 WNG/D11)	-	RNP APCH	-
009	H/M	RONJI	Y	087 (078.9)	-	L	+4 000	-	372747.0 N 1261329.0 E (R 267 NCN/D10, R 288 WNG/D11)	-	RNP APCH	1 min (Outbound timing)

Change : Amended phrases.

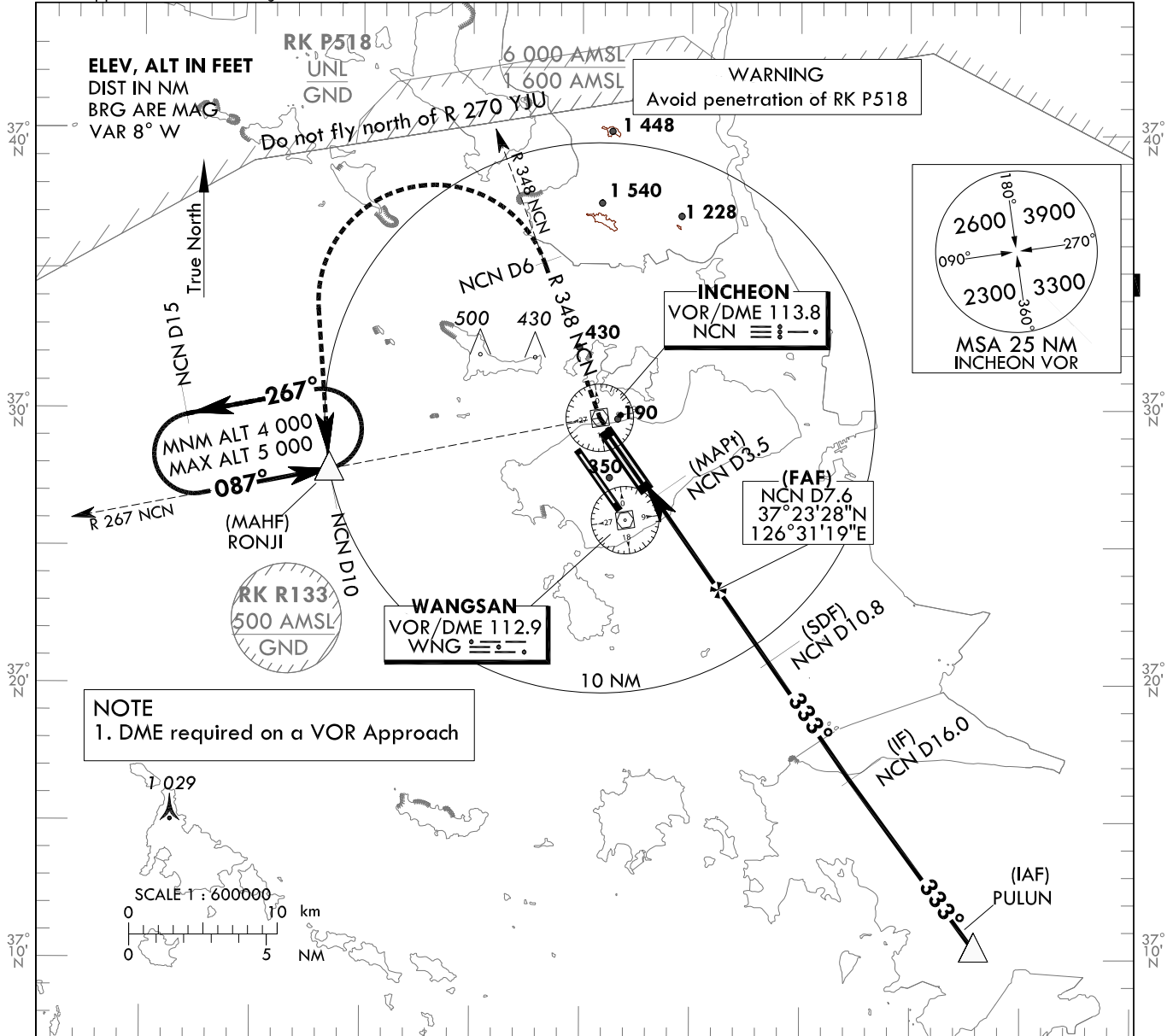
**INSTRUMENT
APPROACH
CHART - ICAO**

AERODROME ELEV 23 ft
HEIGHTS RELATED TO
THR RWY 33R - ELEV 23 ft

SEOUL APP 119.75
119.1
INCHEON TWR 118.2
118.8

**SEOUL/Incheon Intl(RKSI)
VOR
RWY 33R**

Note : Approach under ICAO Flight Procedures.

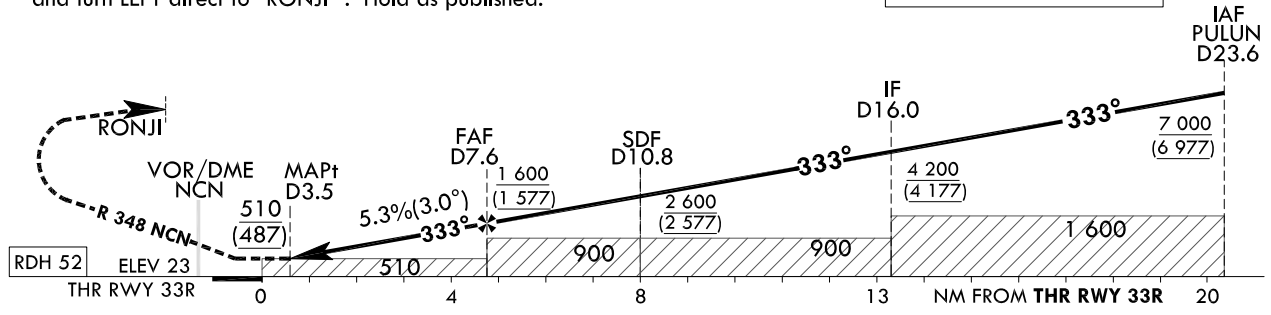


RECOMMENDED PROFILE		DME KIP	7	6	5	4
Final Approach Gradient 5.3%(319.9 ft/NM)		ALT(HGT)	1 408(1 385)	1 088(1 065)	768(746)	449(426)

MISSED APPROACH

Climb to 4 000 ft via "NCN" VOR then RIGHT turn on R 348 NCN to 6 DME and turn LEFT direct to "RONJI". Hold as published.

TRANSITION ALT 14 000
TRANSITION LVL FL 140



CATEGORY		MDA(MDH)	A	B	C	D	Knots						
Straight-in	FULL	510 (487)	1 600 m				Rate of descent	V/V fpm	320	480	640	800	960
	ALS INOP		2 300 m					* Timing Not authorized for defining MAPt. * Circling Not authorized.					

Change : Information of MSA(2100 → 2300).

SEOUL/Incheon Intl(RKSI)
VOR
RWY 33R

AERONAUTICAL DATA TABULATION

VOR Approach to RWY 33R from PULUN			
Fix / Point		Coordinates	
PULUN(IAF)		37°10'22.2" N	126°42'55.7" E
D16 NCN(IF)	BRG 332.56°/7.64NM	37°16'35.5" N	126°37'22.8" E
D10.8 NCN(SDF)	BRG 333.00°/10.80NM NCN	37°20'51.0" N	126°33'37.9" E
D7.6 NCN(FAF)	BRG 333.00°/7.60NM NCN	37°23'28.2" N	126°31'19.3" E
D3.5 NCN(MAPt)	BRG 333.00°/3.50NM NCN	37°26'49.6" N	126°28'21.5" E
THR RWY33R	Final approach descent angle 3°	37°27'22.97" N	126°27'52.82" E
NCN VOR/DME		37°29'41.7" N	126°25'49.2" E
D6 NCN	R 348 NCN/6.00NM NCN	37°35'19.7" N	126°23'12.9" E
RONJI	BRG 183.87°/10.00NM NCN	37°27'47.0" N	126°13'29.0" E

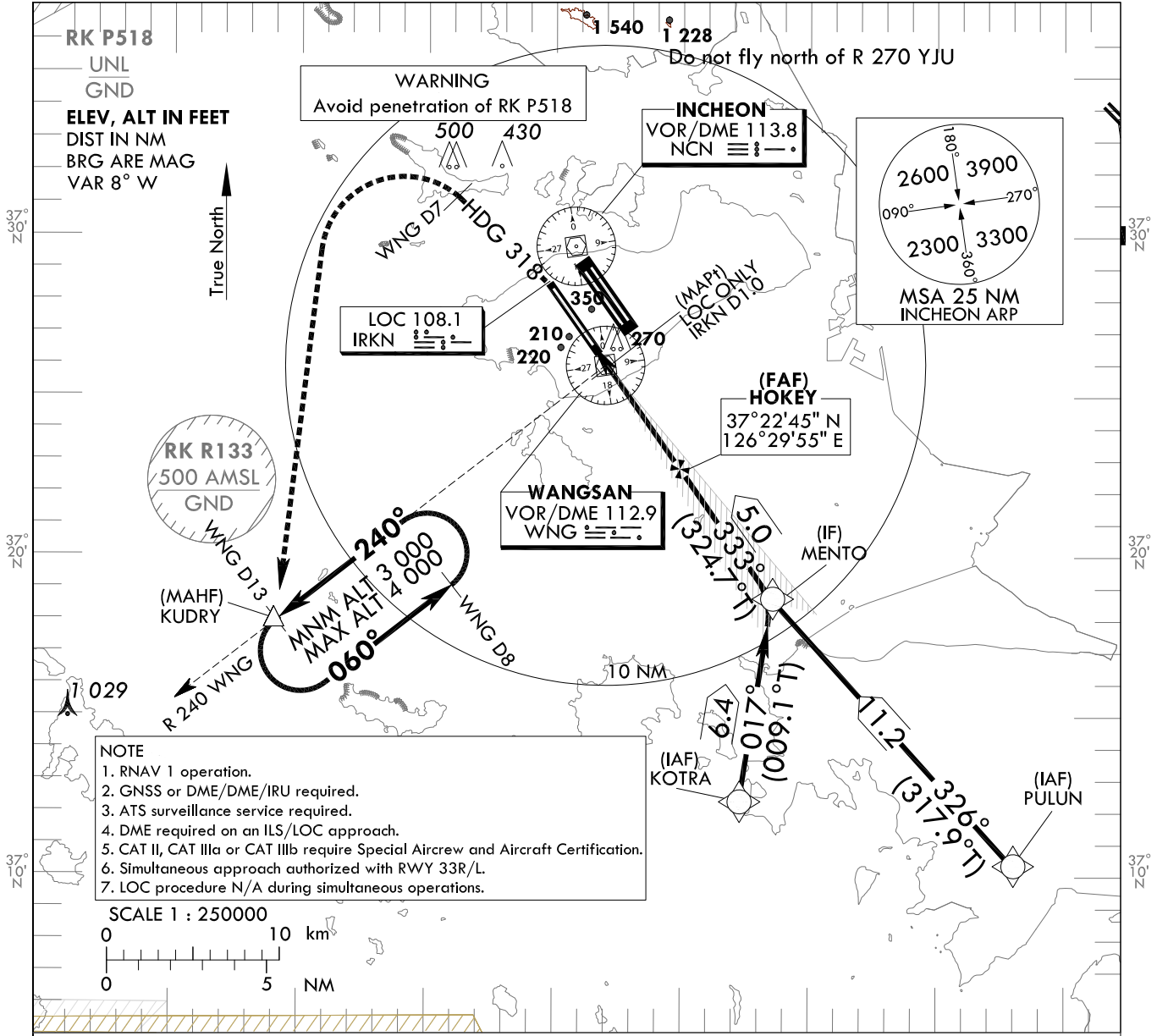
**INSTRUMENT
APPROACH
CHART - ICAO**

AERODROME ELEV 23 ft
HEIGHTS RELATED TO
THR RWY 34 - ELEV 23 ft

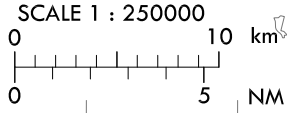
SEOUL APP 119.75
119.1
INCHEON TWR 118.2
118.8

**SEOUL/Incheon Int'l(RKSI)
ILS or LOC RWY 34
CAT II & III**

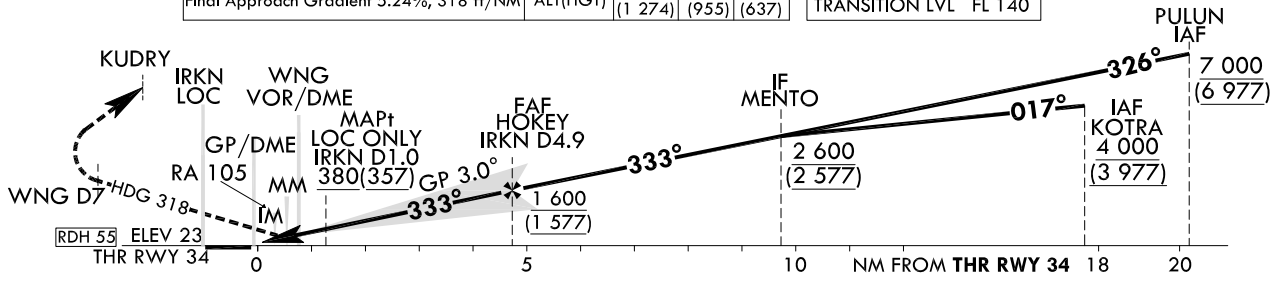
Note : Approach under ICAO Flight Procedures.



- NOTE**
1. RNAV 1 operation.
 2. GNSS or DME/DME/IRU required.
 3. ATS surveillance service required.
 4. DME required on an ILS/LOC approach.
 5. CAT II, CAT IIIa or CAT IIIb require Special Aircrew and Aircraft Certification.
 6. Simultaneous approach authorized with RWY 33R/L.
 7. LOC procedure N/A during simultaneous operations.



RECOMMENDED PROFILE		DME IRKN	4	3	2	TRANSITION ALT 14 000	
Final Approach Gradient 5.24%, 318 ft/NM		ALT(HGT)	1 297 (1 274)	978 (955)	660 (637)	TRANSITION LVL FL 140	



CATEGORY	DA(DH)/MDA(MDH)	A B C D DL				
		CAT-I (CG 2.5%) FULL	251 (228)	RVR 550 m, VIS 800 m		
CAT-I (CG 2.5%) ALS INOP		1 200 m				
CAT-I (CG 3.0%) FULL	223 (200)	RVR 550 m, VIS 800 m				
CAT-I (CG 3.0%) ALS INOP		1 200 m				
LOC	GP INOP (357)	900 m				
	GP & ALS INOP	1 600 m				
CAT II	123(100)	300 m		300 m ¹ /350 m		
CAT IIIa	-	175 m				
CAT IIIb	-	75 m ² /125 m				

MISSED APPROACH
Climb to 500 ft on RWY Heading then turn LEFT on Heading 318° to WNG D7, continue climb to 3 000 ft LEFT turn direct to KUDRY. Hold as published.

NOTE

1. Missed approach turn limited to 210 kt IAS maximum.
2. Missed approach minimum climb gradient of 2.5% to 3 000 ft(DH 228), 3% to 1 000 ft(DH 200 or 100).

* Timing Not authorized for defining MAPt.
* Circling Not authorized.

1) For CAT D/DL aeroplane conducting an autoland.
2) Aeroplane use Fail-operational system.

Change : Information of MSA(2100 → 2300).

SEOUL/Incheon Intl(RKSI)
ILS or LOC RWY 34
CAT II & III

AERONAUTICAL DATA TABULATION

ILS/LOC Approach to RWY 34 from PULUN to MENTO(IF)		
Fix / Point	Coordinates	
PULUN(IAF)	37°10'22.2" N	126°42'55.7" E
MENTO(IF)	BRG 325.81°/11.20NM	37°18'39.4" N 126°33'33.4" E

ILS/LOC Approach to RWY 34 from KOTRA to MENTO(IF)		
Fix / Point	Coordinates	
KOTRA(IAF)	37°12'21.3" N	126°32'17.4" E
MENTO(IF)	BRG 017.00°/6.40NM	37°18'39.4" N 126°33'33.4" E

ILS/LOC Approach to RWY 34 from MENTO(IF) to MAHF		
Fix / Point	Coordinates	
HOKEY(FAF)	BRG 332.58°/4.90NM IRKN	37°22'45.3" N 126°29'55.4" E
D1.0 IRKN(MAPt) (LOC ONLY)	BRG 332.58°/1.00NM IRKN	37°25'55.8" N 126°27'06.2" E
WNG VOR/DME		37°25'58.6" N 126°27'00.0" E
THR RWY34		37°26'36.29" N 126°26'30.21" E
IRKN DME		37°26'42.5" N 126°26'18.8" E
Climb to 500 ft	HDG 333	-
D7 WNG		-
KUDRY	BRG 194.59°/13.00NM WNG	37°17'58.7" N 126°14'09.0" E

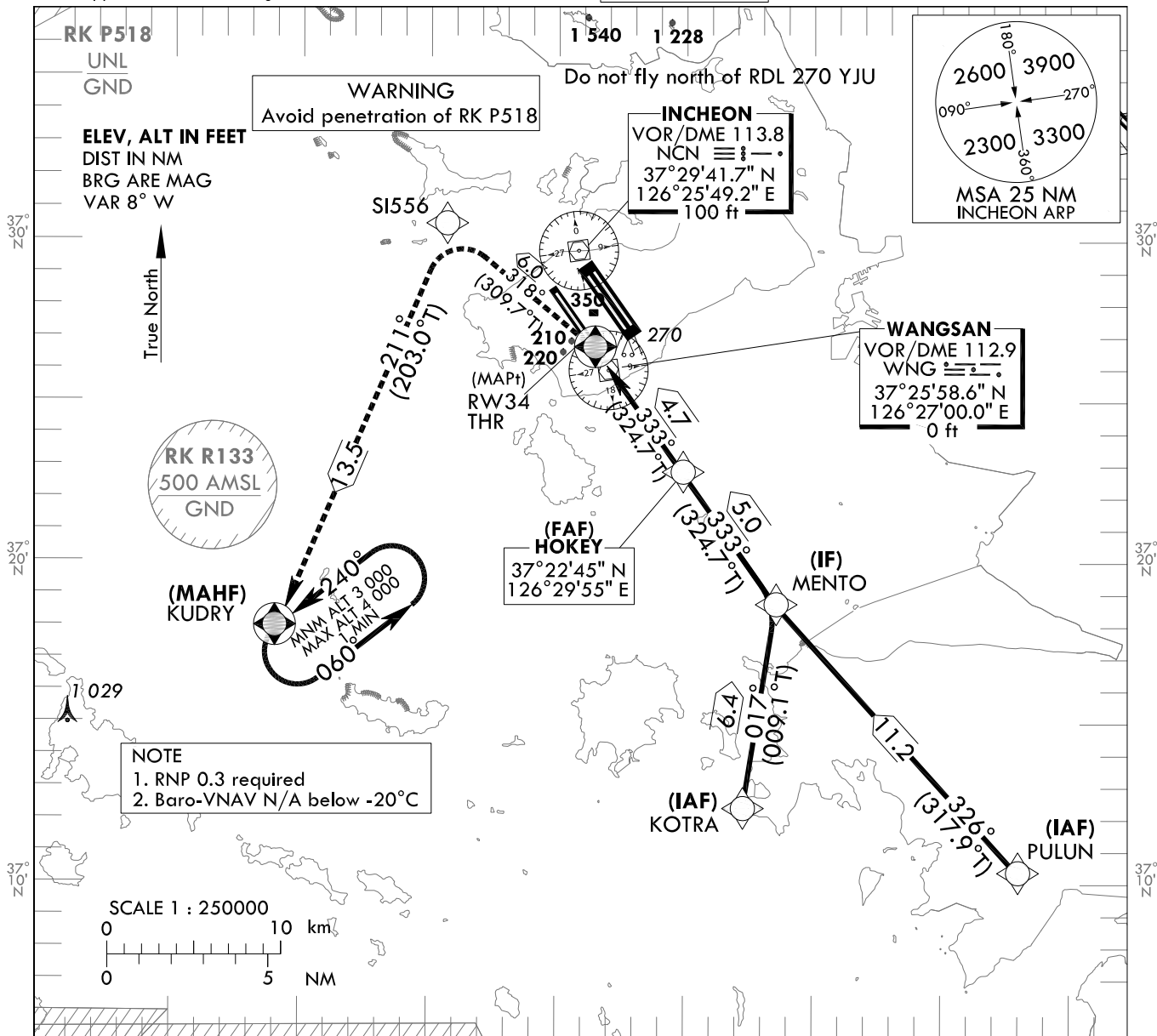
**INSTRUMENT
APPROACH
CHART - ICAO**

AERODROME ELEV 23 ft
HEIGHTS RELATED TO
THR RWY 34 - ELEV 23 ft

SEOUL APP 119.75
119.1
INCHEON TWR 118.8
118.2

SEOUL/Incheon Intl(RKSI)
RNAV(GNSS)
RWY 34

Note : Approach under ICAO Flight Procedures.

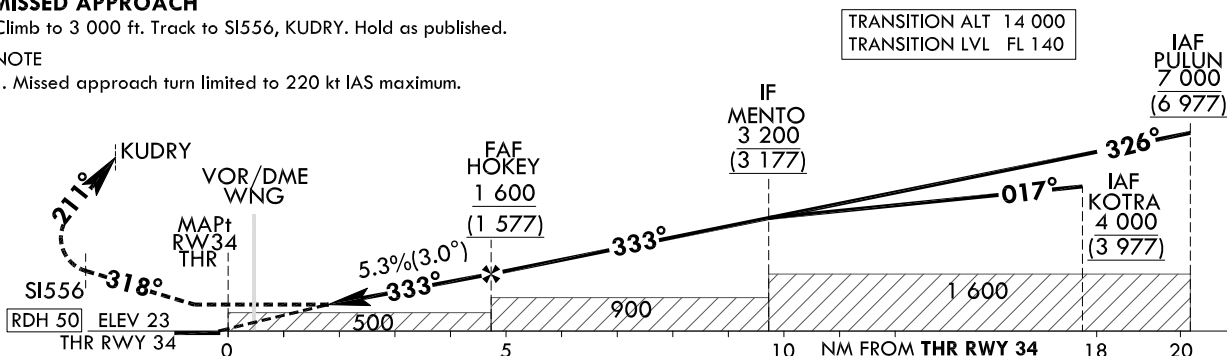


MISSED APPROACH

Climb to 3 000 ft. Track to SI556, KUDRY. Hold as published.

NOTE

1. Missed approach turn limited to 220 kt IAS maximum.



CATEGORY		MDA(H)/DA(H)	A	B	C	D	Knots						
LNAV	FULL	510 (487)	1 500 m				Rate of descent	V/V fpm	324	486	648	810	972
	ALS INOP		2 300 m										
LNAV/VNAV	FULL	430 (407)	1 200 m				* Timing Not authorized for defining MAPt. * Circling Not authorized.						
	ALS INOP		1 900 m										

Change : Amended phrases.

SEOUL/Incheon Intl(RKSI)
RNAV(GNSS)
RWY 34

AERONAUTICAL DATA TABULATION

Instrument Approach Procedure Coding Tables

RNAV(GNSS) RWY 34 - via PULLUN to MENTO(IF)

Serial Number	Path Descriptor	Waypoint Identifier	Fly-over	Course/Track °M(°T)	Distance (NM)	Turn direction	Altitude (ft)	Speed (kt)	Coordinates	VPA/TCH	Navigation specification	Remarks
001	IF	PULLUN	-	-	-	-	+7 000	-	371022.2 N 1264255.7 E (R 153 NCN/D24, R 149 WNG/D20)	-	RNP APCH	IAF
002	TF	MENTO	-	326 (317.9)	11.2	-	+3 200	-	371839.4 N 1263333.4 E (R 159 NCN/D13, R 152 WNG/D9)	-	RNP APCH	IF

RNAV(GNSS) RWY 34 - via KOTRA to MENTO(IF)

Serial Number	Path Descriptor	Waypoint Identifier	Fly-over	Course/Track °M(°T)	Distance (NM)	Turn direction	Altitude (ft)	Speed (kt)	Coordinates	VPA/TCH	Navigation specification	Remarks
001	IF	KOTRA	-	-	-	-	+4 000	-	371221.3 N 1263217.4 E (R 171 NCN/D18, R 171 WNG/D14)	-	RNP APCH	IAF
002	TF	MENTO	-	017 (009.1)	6.4	-	+3 200	-	371839.4 N 1263333.4 E (R 159 NCN/D13, R 152 WNG/D9)	-	RNP APCH	IF

RNAV(GNSS) RWY 34 - via MENTO(IF) to MAHF

Serial Number	Path Descriptor	Waypoint Identifier	Fly-over	Course/Track °M(°T)	Distance (NM)	Turn direction	Altitude (ft)	Speed (kt)	Coordinates	VPA/TCH	Navigation specification	Remarks
002	TF	MENTO	-	-	-	-	+3 200	-	371839.4 N 1263333.4 E (R 159 NCN/D13, R 152 WNG/D9)	-	RNP APCH	IF
003	TF	HOKEY	-	333 (324.7)	5.0	-	+1 600	-	372245.3 N 1262955.4 E (R 163 NCN/D8, R 152 WNG/D4)	-	RNP APCH	FAF
004	TF	RW34	Y	333 (324.7)	4.7	-	+510	-	372636.29 N 1262630.22 E (R 178 NCN/D3, R 336 WNG/D1)	-3.01/50	RNP APCH	MAPt
005	TF	S1556	-	318 (309.7)	6.0	-	-	-220	373024.6 N 1262044.8 E (R 288 NCN/D4, R 320 NCN/D7)	-	RNP APCH	-
006	TF	KUDRY	Y	211 (203.0)	13.5	-	+3 000	-220	371758.7 N 1261409.0 E (R 226 NCN/D15, R 240 WNG/D13)	-	RNP APCH	-
007	HM	KUDRY	Y	240 (232.0)	-	L	-4 000 +3 000	-	371758.7 N 1261409.0 E (R 226 NCN/D15, R 240 WNG/D13)	-	RNP APCH	1 min (Outbound timing)